

TOURIST GUIDE TO THE REGION

ZLÍNSKO AND LUHAČOVICKO

Zlín Region | Luhačovice Region | Otrokovice Region | South Wallachia



European Union
European Regional Development Fund
Partner for your development



"Welcome to the Regions of Zlín and Luhačovice"

Dear visitors,

We have prepared for you a guide that will introduce you to the most interesting areas in the regions of Otrokovice, Zlín, South Wallachia, Luhačovice. Each of these areas is beautiful, unique in its own way, and worth an up-close look.

In the Zlín area of course you have Zlín, a modern garden city, a center with rich cultural, social life and sports scene, and the famous Baťa architecture. But go just a couple of kilometers further and you will find yourself in beautiful country, with medieval castles and fairy tale chateaus, or the tropical flora and fauna of the Yucatan on display at the Zlín zoo.

South Wallachia invites you to experience the fragrance of the orchid meadows of the White Carpathians, authentic Wallachian folklore and wooden cottages, tasty plum pies and slivovice. You will

also find an impregnable castle that has guarded the nearby border for centuries, not far from the sites of desperate World War II battles.

The Luhačovice region presents itself to you not only in the form of Moravia's greatest spa, Luhačovice, but with its inimitable architecture, its plethora of mineral springs, and its relaxed atmosphere, not to mention its mysterious castle ruins, and the pilgrimage sites atop bucolic mountain meadows.

The fertile region around Otrokovice likewise has much to offer, like the Baťa Canal, the living folk traditions of the Haná Plain and the Moravian Slovakia, or the famous local horse farms.

We are certain that this guide will help you get to know our country by enjoying a few unforgettable days.



Chateau Lešná

Contents

ZLÍN REGION 2

OTROKOVICE REGION20

LUHAČOVICE REGION30

SOUTH WALLACHIA46

INDEX62

MAP64



Welcome to the Zlín Region

The city of Zlín and surrounding area can boast of a number of precious natural areas, especially concentrated in the nature parks Želechovické Pastures, Hostýnské Hills, and Vizovické Hills. Those interested in nature and exotic animals will surely appreciate a visit to Zlín's unique zoological garden. To access the beauties of nature, as well as the historical monuments of Zlín and the region

around it, we recommend the region's dense network of marked trails for walkers and bicyclists.

Zlín is perhaps most famous for its legacy of modern Functionalist architecture. Before the Second World War the region around Zlín and Otrokovice grew into a unique urban complex, the symbol of which became the famous Zlín Skyscraper. The region's older historic sites include the ruins of Castle Lukov, Castle Male-



Downtown



Congress and university center in Zlín



Art House in Zlín



novice, chateaus in Lešná and Vizovice, the church in Tečovice, the pilgrimage church in Štípa or the Magistrate Mikuláščík's farmstead in Jasenná.

Zlín is the cultural center of the region; thus it is possible to visit the Museum of Southeastern Moravia or the Museum of Shoemaking; then there is the Regional Art Gallery, the Bohuslav Martinů Philharmonic, the Municipal Theater, and the Small Stage theater scene. The

region's menu of culture events is very broad; there are festivals devoted to theater, classical music, children' and young people's films, and many folk festivals.

There are a number of well-equipped sports areas, a spa in Kostelec with a golf course, and the Health Trail in the woods around Zlín. Winter vacation can be spent on the slopes, or on the cross-country trails in the Hostýnské and Vizovické Hills.



Zlín Get-together



Chateau Vizovice



International Children's and Young People's Film Festival



Zlín Zoo



Castle Lukov

Zlín – A Town in Motion

A modern and in that sense youthful town, Zlín is remarkable especially for its unique Functionalist architecture. Its typical unstuccoed brick buildings, the basic construction element of the famous Baťa houses, set into an all-encompassing greenery, a reinforced-concrete frame, flat rooftop, and steel window frames – these are the characteristic signs of most of the town's dominant structures.

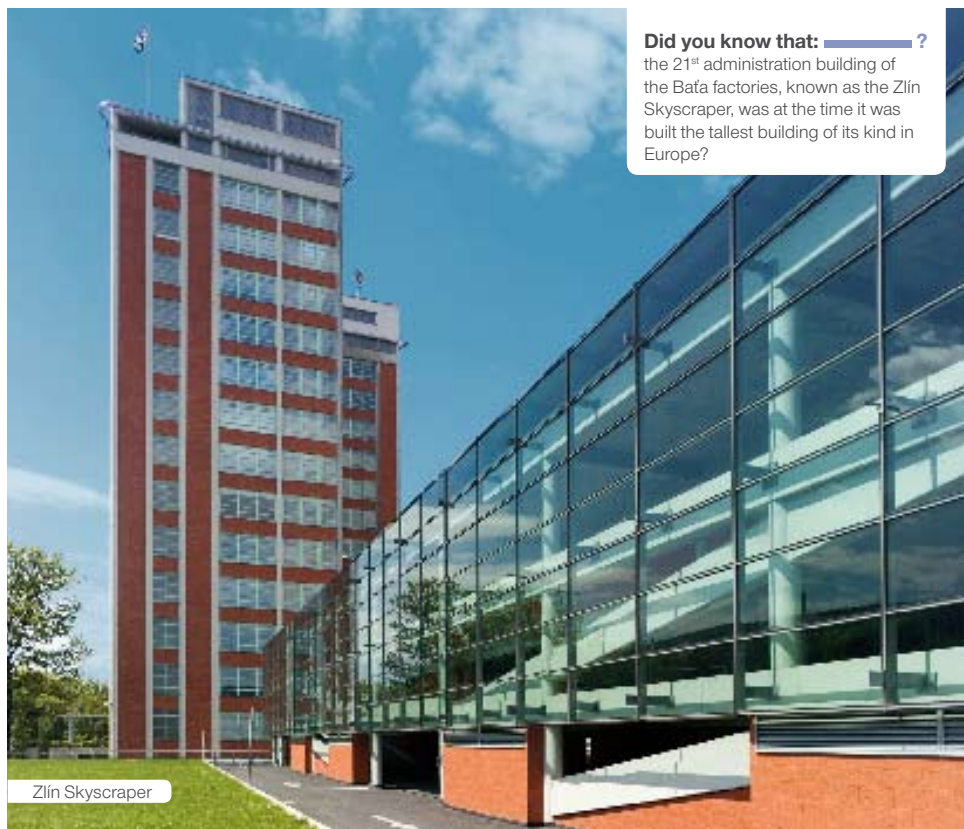
The first written mention of Zlín dates to 1322, but until the 19th century it remained a quiet little town. The oldest history of Zlín and surroundings can still be seen in the Malenovice Castle and the chateau in Zlín, where the museum exhibit is well worth a visit. The town's history was greatly changed in 1894, when Tomáš Baťa founded his shoemaking business here. In the interwar period, during the heyday of the Baťa

factories and the entire town in the inter-war period important architects such as J. Kotěra, F. L. Gahura, V. Karfik or M. Lorenc gave Zlín the extraordinary legacy of their Functionalist architecture, unique in Europe. Among the important monuments from that era are the famous Zlín Skyscraper, the Art House, or the Big Cinema, not to mention the typical unstuccoed brick houses of reinforced concrete frame, flat rooftops, and metal windows that are found all over the town. The majority of the most valuable buildings from that era and others are part of the town's urban monument zone.

Zlín today is the headquarters of a number of important bureaus and institutions, and the town can boast of a rich cultural and social life. There are several museums, a theater, philharmonic orchestra, and the re-

Did you know that: ?

the 21st administration building of the Baťa factories, known as the Zlín Skyscraper, was at the time it was built the tallest building of its kind in Europe?



Zlín Skyscraper

gional gallery. Zlín is also a town that hosts important congresses. Among the interesting events regularly held in Zlín is the Barum Rally automobile race, watched every year by hundreds of thousands of viewers, the International Film Festival for Children and Young People, the Brass Band Festival, The Unknown Land – a festival for travel and understanding between cultures, and Talentinum – an international revue of young concert musicians, or Zlíntalent.

Zlín and the nearby area offer many opportunities for spending a truly fine vacation. In the immediate vicinity there is the fascinating nature park Želechovické Pastures, the spa and golf course in Zlín-Kostelec, the town's famous zoo, and the chateau Lešná.



Did you know that: — ?

in 1910–1936 the population of Zlín rose by more than ten times, from 3,600 to 38,000?



Bata Architecture



Festival of brass bands



Town Hall



Museum of Footwear



Tomáš Bata University – Jižní Svahy

ZLÍN REGION

ROUTE 1: Walking circuit around the town

To see the sights in Zlín you can take the trail, which connects all of the important places in the center of town, while also giving you a taste of the surrounding countryside, and also a little exercise.

TOWN HALL BUILDING

nám. Míru 12, 761 40 Zlín

☎ + 420 577 630 111

www.mestozlin.cz

49°13'35.631"N, 17°39'58.552"E



Town Hall

The original Renaissance town hall from 1586 burned down in 1921, and a year later work was begun on a new town hall designed by František L. Gahura. It was finished in 1923, but gained its present appearance in 1936–1937. Architect Gahura is also the author of the sculpture of a metalworker on the northern facade. Opposite the town hall stand statues of St. Florian and St. Donatus from the 18th century.

MUNICIPAL THEATER

třída Tomáše Bati 4091/32

761 87 Zlín

☎ +420 577 636 111

www.divadlo.zlin.cz

49°13'30.93"N, 17°40'9.969"E

The professional theater in Zlín was

founded in 1946, and was originally located in the building now housing the Small Stage on Štefánikova Street. The Municipal Theater, then called the "Workers' Theater", was built according to designs by architects M. Řepa and F. Rozhon; it was the first theater built in Czechoslovakia after the war. It was completed in 1967, and had a capacity of 800. Today Zlín's Municipal Theater is one of the best regional stages in

the CR. The foyer is used by the State Gallery in Zlín, and each year at the beginning of May it hosts the international theater festival Setkání – Stretnutie (Encounter).



ROMAN CATHOLIC CHURCH OF ST. PHILLIP AND JAMES

Sadová ul., 760 01 Zlín

☎ +420 577 210 022

www.farnostzlin.cz

49°13'29.949"N, 17°40'5.491"E

The church, which dates to the end



of the 14th century, has been reconstructed several times, last time in the late 19th century after being damaged by fires in 1819 and 1849. Its bells, which bear the names Filip, Jakub, and Martin, were installed in 1920 thanks to the contributions of churchgoers and financial donations from Tomáš Baťa, Count Haupt – the owner of the Zlín estate, and Czech emigrants living in America. Besides regular worship services the church is also a concert venue.

COLLECTIVE RESIDENTIAL HOUSE, ALTERNATIVA CULTURAL INSTITUTE

Osvoboditelů 3778

760 01 Zlín

☎ + 420 577 018 162

49°13'23.179"N, 17°40'6.424"E

This twelve-story building designed by architect Jiří Voženilek was built during 1945–1950. It was a first attempt to create a new form of residence. In the lower part of the former university cafeteria a new cultural institute called the Alternativa was opened in September 2003. The space hosts lectures, poetry readings, fashion shows, music recitals, puppet theater, auctions, lectures, and exhibitions.

PROTESTANT CHURCH

Štefánikova 3018, 760 01 Zlín
☎ +420 577 210 004
📠 +420 732 965 735
49°13'27.441"N, 17°40'33.369"E

This spare and simple structure designed by architect Vladimír Karfík is topped by a thin bell tower connected to two rectangular structures.

ASTRONOMICAL OBSERVATORY

Lesní čtvrť III/5443, 760 01 Zlín
☎ +420 732 804 937
www.zas.cz
49°13'3.508"N, 17°41'33.187"E



The modern observatory on the grounds of the Zlín Gymnasium replaced in May 2002 the original planetarium from the early 1950s. It offers the public, schools, and groups a chance to gaze at the stars, and features a regular lecture calendar.

LAZY RECREATION AREA

www.mestozlin.cz
49°12'55.117"N, 17°40'33.402"E

This area of tourist and bicycle trails located above the town quarter called Lazy is centered around the



gazebo "U spáleného dubu" (The Burned Oak). Along the trails there are benches, resting places, and information panels that acquaint visitors with the local points of interest.

MUNICIPAL SPA

Hradská 888, 760 01 Zlín
☎ +420 577 599 911
www.laznezlin.cz
49°13'18.015"N, 17°40'10.984"E



A winter spa was built in 1952 on the site of a former brick works, not far from the youth center and the school grounds. The project designer was Vladimír Karfík in cooperation with Ladislav Ambrožek and Josef Holeček. In 1985 a 50 m pool designed by arch. Jiří Kotásek was added to the original 25 m pool. Between the two indoor pools is an outdoor pool with a wading pool, children's playground, and a green recreation area. There is also a heated children's pool, steam baths and sauna, massage, a spinning studio, fitness room, refreshments, and children's diving club.

ARTIFICIAL SKI SLOPE

nám. T. G. Masaryka 5144
760 01 Zlín
☎ +420 577 589 118
www.svahzlin.cz
49°13'5.428"N, 17°40'2.897"E

Behind the House of Art is a 220 m long ski slope with lift capacity of 510 persons per hour. The slope is equipped for artificial snowmaking, and there is a 70 m tow lift for be-



ZLÍN REGION

TOMÁŠ BAŤA MEMORIAL – ART HOUSE, DORMITORIES

nám. T. G. Masaryka 2570
760 01 Zlín
☎ +420 577 210 662
www.kgvu.zlin.cz
49°13'8.897"N, 17°39'56.818"E

In 1927 construction was begun on an entire city quarter for mass accommodation of young Baťa factory employees. Three- to five-story houses were built according to designs by architect František L. Gahura, and were finished in 1937. In 1933 construction was begun on a cultural center, which encloses the sloping park between the dormitories. The most powerful architectural

ver, he had a disagreement with Tomáš Baťa, and Baťa ordered two model rooms to be built on the fourth floor by architects Gahura and Karfik. The building was then completed in 1933 according to plans by Vladimír Karfik.

RESIDENTIAL LIVING IN BAŤA'S ZLÍN

Nad Ovčárnou II 1295
760 01 Zlín
☎ +420 737 145 175
www.muzeum-zlin.cz
49°13'14.218"N, 17°39'46.188"E

A new exposition by the Museum of Southeastern Moravia in Zlín is located in house no. 1295 in the quarter

THE BIG CINEMA

náměstí Práce 2511, 760 01 Zlín
☎ +420 577 432 936
www.velkekino.cz
49°13'17.714"N, 17°39'37.352"E



This movie theater was built in 1933 originally as a temporary facility. It was the first cultural facility in Zlín intended for mass audiences. With an incredible capacity of 2,270 seats it was surely the largest cinema in pre-war Czechoslovakia, and evidently in Central Europe.

SPORTS COMPLEX

Zimní stadion L. Čajky (ice area)
Břežnická 4068, 760 01 Zlín
☎ +420 577 056 011
http://hokej.zlin.cz
Sportovní hala Novesta (hall)
U Zimního stadionu 4286
☎ +420 577 431 404
49°13'4.743"N, 17°39'34.245"E



Residential living in Baťa's Zlín

work by F. L. Gahura, a memorial to Tomáš Baťa, was converted in 1954 by architect J. Staša into a House of Art serving as a gallery and a concert hall for the Zlín Philharmonic.

COMMUNITY HOUSE – INTERHOTEL MOSKVA

náměstí Práce 2512
762 70 Zlín
49°13'16.033"N, 17°39'40.443"E

This eleven-story building, which was intended to become the town's main social hall, was begun in 1931 by architect Miroslav Lorenc. Howe-

ver, he had a disagreement with Tomáš Baťa, and Baťa ordered two model rooms to be built on the fourth floor by architects Gahura and Karfik. The building was then completed in 1933 according to plans by Vladimír Karfik.

called Nad Ovčárnou. Here you can look at the interior of the residential houses built for the Tomáš Baťa factories. The living room and kitchen on the ground floor is equipped in early 20th century style. On the first floor above ground in the children's room is an exhibit showing the history of the Baťa housing. In the bedroom there is a seasonal display showing the houses of the top Baťa officials, and samples of clothing, footwear, and accessories from the 1st half of the 20th century.



An ice area with innovative roof construction forms the core of the sports and recreation complex near the center of Zlín. It includes a hall

for ball games which is also used for concerts, and a newly-opened ice arena with laser light equipment. During the summer skaters and hockey players give way to in-line skaters.

HEALTH TRAIL

www.mestozlin.cz
49°12'7.605"N, 17°38'36.66"E



The Health Trail below Tlustá Hill offers a number of possibilities for jogging, bicycling, children's games, fitness, and walks. A number of marked trails lead to a summer pavilion, a suspension bridge, and five stops with parallel bars, trapeze, and ribstall, slides, and swings.

TOMÁŠ BAŤA UNIVERSITY

nám. T. G. Masaryka 5555
760 01 Zlín
www.utb.cz
49°13'23.01"N, 17°39'52.483"E

The university offers studies at five faculties covering the fields of economics, humanities, natural science, technology, and art. It ranks as one of the Czech Republic's medium-sized universities, with more than 11,000 students. The university campus in Zlín-Jižní Svahy inaugurated in 2004 is one of the most modern in the Czech Republic and in Europe.

CONGRESS AND UNIVERSITY CENTER

nám. T. G. Masaryka 5555
760 01 Zlín
49°13'23.01"N, 17°39'52.483"E

The university center complex was designed by Zlín native and world-renowned architect Eva Jiříčná. The multi-purpose center is to serve as a university library with 450 study places, the rector's offices, and contain a large auditorium for 700 persons, which will be the new seat of the Bohuslav Martinů Orchestra.

THE ZLÍN SKYSCRAPER – 21ST ADMINISTRATION BUILDING

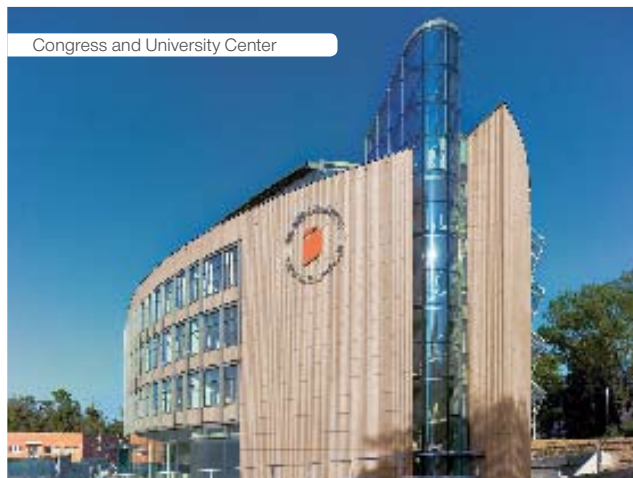
třída Tomáše Bati 21
760 01 Zlín
49°13'23.327"N, 17°39'30.347"E

The 21st Administration Building of the Baťa shoe factories was, at the time of its completion in 1938, one of the first high-rise buildings in Europe. This 77.5-meter-high seventeen-story building, now protected as a national cultural monument, was the masterwork of architect Vladimír Karfík. After reconstruction it now



serves as the seat of the Regional Office in Zlín. Among its technical gems are the elevators, especially the elevator/office of the director, with air conditioning and a wash basin. Also worthy of a visit are the small exhibit on the ground floor and the overlook deck on the roof, offering an excellent view over the entire city of Zlín.

Congress and University Center



ZLÍN REGION

MUSEUM OF FOOTWEAR

třída Tomáše Bati, 760 01 Zlín

☎ +420 577 522 225

www.muzeum-zlin.cz

49°13'25.418"N, 17°39'37.283"E

The heart of the museum's exhibit is the historic and exotic footwear collected by the Baťa firm and first presented to the public in 1931. The collection includes footwear from every continent; the oldest specimens date from the 15th century. The Zlín shoe museum is one of the oldest of its kind in the world. It documents the making of shoes from the technological standpoint, and captures the history of industrial shoe production in the Zlín area.



Museum of Footwear

BAŤA SHOE FACTORIES

Vavrečkova ul., 760 01 Zlín

49°13'28.03"N, 17°39'30.031"E

The first factory buildings that were built in Zlín beginning in 1906 did not yet bear the typical marks of Baťa architecture. These began to appear in 1924, with the conversion of the existing factory buildings with the new building technology based on the 6.15 m x 6.15 m module. The reinforced concrete frame was filled in with brick parapets and windows. The buildings were from two to five stories high. These standardized industrial buildings were arranged in

chessboard pattern into larger production ensembles, and interconnected by a transportation system.

ZLÍN CHATEAU AND THE MUSEUM OF SOUTHEASTERN MORAVIA

Soudní 1, 762 57 Zlín

☎ +420 577 004 611

www.muzeum-zlin.cz

49°13'32.77"N, 17°39'47.484"E

The originally Renaissance chateau, with its Baroque renovation dating from the 18th century, was bought in 1929 for the town by its mayor Tomáš Baťa. Until 1958, when it became the museum, the chateau was used in various ways. Today besides



the museum it houses an exhibit of the State Gallery. In the museum you can see a permanent exhibit on the travelers Jiří Hanzelka and Miroslav Zikmund, and the exhibit "The Zlín Film Studio – From Advertisement to Films for Children".

TOMÁŠ BAŤA VILLA

Gahurova 292, 760 01 Zlín

☎ +420 577 219 083

www.batova-vila.cz

49°13'45.107"N, 17°39'28.277"E

The villa was begun by the firm of František Novák of Vizovice in 1901



according to his own design. However, Tomáš Baťa was not satisfied with the result, and gave the villa to architect Jan Kotěra to complete. According to his design the villa was completed in 1911. The house soon became not only a pleasant residence, but a place where the industrialist would invite his friends and guests. At present the villa houses the Tomáš Baťa Foundation, which holds conferences, seminars, training programs, concerts, and exhibitions of both beginning and well-known artists.

FOREST CEMETERY IN ZLÍN

Filmová 412, 760 01 Zlín

49°12'4.93"N, 17°39'44.219"E

This extensive cemetery in the middle of the forest was founded in the early 1930s according to design by architect F. L. Gahura as a central cemetery for the communities of greater Zlín. Its main feature is a stone cross with Gahura's sculpture of a crucified Christ. The cemetery was consecrated in 1932, and one of the first people buried there was Tomáš Baťa.

ROUTE 2: Around Zlín

Around the outskirts of town and just outside of it there are a number of interesting places to go, like Castle Malenovice, Svatá voda, or the church in Tečovice. The route takes you to the north of Zlín to the foothills of the Hostýnské Hills. You will visit the spa town of Kostelec, the popular zoological garden and the chateau in Lešná, Castle Lukov, and the historic sites of Štípa.

SVATÁ VODA (HOLY WATER)

www.farnost-malenovice.info
49°12'4.451"N, 17°34'20.664"E

A holy pilgrimage site and a favorite destination for outings is found in the woods above Malenovice, where there is a spring that is said to have miraculous powers of healing. In the steep slope above the spring is a rock cave with a statue of the Virgin Mary of Lourdes. From the spring a trail leads past the Slanice spring and the Maják back to Zlín.

CASTLE MALENOVICE

Švermova 448, Malenovice
763 02 Zlín
☎ +420 577 103 379
www.muzeum-zlin.cz
49°12'13.423"N, 17°35'58.197"E



Castle Malenovice is one of the few remaining pieces of medieval architecture in the Zlín area. The main structure dates from the early 16th century, when Malenovice was held by the family Tetour of Tetov. In 1953 the entire place was taken

over by the Museum of Southeastern Moravia in Zlín, and a branch and depository of the museum was opened there along with exhibit areas, where you can look over the archeological collection and an exhibit on orientation running.

TEČOVICE CHURCH

763 02 Tečovice
☎ +420 731 604 304
www.farnost-malenovice.info
49°13'26.822"N, 17°34'56.515"E

One of the oldest historic places in the region is the church at Tečovice consecrated to St. James the Greater. It was built in Romanesque style sometime around 1260 on the site of an older church. Later the church was partially reconstructed in Baroque. Especially valuable are the wall frescoes from the 14th century, and the Gothic portal. Around the church is a cemetery enclosed by a wall.

KOSTELEČ SPA

Kostelec 493, 763 14 Zlín
☎ +420 577 152 111
www.hotel-kostelec.cz
49°15'12.538"N, 17°41'59.703"E

The mineral waters in Kostelec have been used for health treatments since 1742, but the spa itself was built



at the beginning of the 20th century. Today there is a hotel and recreation center at the site. Guests can take advantage of the swimming pool, tennis court, golf course, fitness room with indoor golf, and in the summer season a heated outdoor pool. The hotel provides spa services, and sports and cultural events. In the nearby area you can connect onto a bicycle route that joins the sports area Vršava with the Zlín Zoo in Štípa.

ZOOLOGICAL GARDEN ZLÍN AND LEŠNÁ CHATEAU

Lukovská 112, Štípa, 763 14 Zlín 12
☎ +420 577 914 180
www.zoolesna.cz
49°16'17.326"N, 17°42'54.445"E

The Zlín zoo is one of the most popular in the Czech Republic, and for a good reason. In one day you can visit Africa, Asia, Australia, and America, as the zoo is organized according to continents. The favorites



Zlín Zoological Garden

ZLÍN REGION

among the 210 species of animals found here in extensive natural expositions, are elephants, giraffes, gorillas, seals, lions, tigers, and penguins. A unique experience is offered by the new tropical hall Yucatan, but also among the popular attractions is a visit to the “fairy tale” castle of Lešná, a play corner for the smallest ones, rides on a pony or a camel, the feeding of the animals with commentary, or a ride on the zoo train circuit. .

ŠTÍPA

Church of the Birth of the Virgin Mary
Mariánské nám., Štípa
763 14 Zlín 12

 +420 577 914 251, www.stipa.cz

49°15'44.471"N, 17°42'55.734"E

Windmill

Pod větrákem 130, Štípa

763 14 Zlín

49°15'47.813"N, 17°44'22.497"E

The village's most visible feature is the Baroque pilgrimage church of the Birth of the Virgin Mary, considered one of the biggest and most beautiful in the entire area. Its cor-

nerstone was laid in 1616, but the structure was not completed until 1762. Two years later the miraculous



statue of the Virgin Mary was ceremoniously carried to the church.

A no-less-important historical site in Štípa is the Dutch-type windmill from 1858–1860 complete with original internal machinery. The windmill functioned until the Second World War, and secretly even during the war. In 1964 the owners of the mill were forced to hand it over to the state monuments protection office. After 1989 the mill was returned

to the descendants of its original owners. It is not open to the public.

CASTLE LUKOV

763 17 Lukov

 +420 608 874 564

<http://hrad-lukov.ic.cz>

49°18'11.26"N, 17°44'22.504"E

Above the village of Lukov stands a large Gothic castle. This early 13th-century castle was conquered and destroyed in 1626 by Wallachian insurgents and was completely abandoned in 1870. A large exterior area was separated from the castle



itself by a deep ditch. On the site today you can still see the massive support pillars, the remnants of the keep, towers, and outer walls. The castle has been partially reconstructed, and its history is well described along an instructional trail. Points of interest in the village below the castle include the old brewery building, the parish church of St. Joseph from 1812, and the Villa Tusculum from the late 19th century, now converted to a comfortable hotel.

LUKOV INSTRUCTIONAL TRAIL

www.lukov.cz

49°17'58.574"N, 17°43'35.544"E

The trail presents the natural highlights around Lukov. It can be done on foot, either in a shortened version (basic circuit 7.5 km), or entire (circuit with side spurs 9.5 km). It has three independent spurs to the



Windmill in Štípa

natural sites Ondřejovsko, Bzová, and Králky, and ends back at Castle Lukov.

VELA NATURAL SITE

<http://nature.hyperlink.cz>
49°18'32.598"N, 17°43'17.015"E

Vela is one of the last remnants of the original beech forest in the Hos-



týnské Hills. The rock outcropping that juts out at the top of the hill is an especially valuable site. The outcroppings are part of one shorter and one longer continuous rock ridge.

KRÁLKY NATURAL SITE

<http://nature.hyperlink.cz>
49°18'3.895"N, 17°44'28.534"E

This rocky outcropping near the ruins of castle Lukov is the subject of many legends. According to one of them, it was the site of the so-called Wallachian hunting court. Another version says that a meeting took place here at the beginning of the 19th century between the young members of the noble families Seilern of Lukov-Lešná and Magnis of



Strážnice. As a memorial to the friendship the place was marked by a stone table and seats carved out of the rock.

ROUTE 3: An outing to Vizovice

Vizovice is known not just for its Baroque chateau, but for its tradition of slivovice (plum brandy) and Vizovice dough figurines. It hosts the annual Plum Harvest Festival, where traditional plum dumplings are served in addition to the obligatory slivovice. There is also a folk festival Valašský regál, and a rock festival called Masters of Rock.

VIZOVICE CHATEAU

Palackého 376, 763 12 Vizovice
☎ +420 722 611 972
<http://zamek-viz.hyperlink.cz>
49°13'10.992"N, 17°51'1.72"E

This late Baroque chateau was built in 1750–1770 according to designs by architect F. A. Grimm in the French style that was modern at the time. On display at the chateau are collections of fine furnishings in the styles of Baroque, Rococo, Empire, and Biedermeier, as well as a large

collection of paintings and a rare set of works by Dutch authors. The interior of the chateau chapel is the work of Moravian master sculptor Ondřej Schweigl, whose sculptures also adorn the adjacent chateau park, which is open to the public all year round.

HISTORIC SITES OF THE URBAN MONUMENT ZONE

www.vizovice.eu
49°13'11.187"N, 17°51'4.895"E

In 1995 the historic center was declared an urban monument zone. Besides the chateau, other points of interest include the late Baroque



Vizovice Chateau

ZLÍN REGION

hospital of the Merciful Brethren from 1781, the parish church of St. Laurent from 1792, the parish house, the column with the statue of the Virgin Mary of Sorrows on Masaryk Square, and house no. 360 on Říčanská Street. The latter, a one-story villa with an attic from the early 20th century and Art Nouveau facade, is practically in its original state, with no significant visible alterations.

DISTILLERY LAND

Razov 472, 763 12 Vizovice

+420 577 686 119

www.rjelinek.cz

49°12'53.376"N, 17°50'17.386"E

The most prominent bearer of the tradition of producing fruit distillates in Vizovice is the firm of Rudolf Jelínek. At present the company offers a complete line of fine fruit liquors, which are made using traditional methods. At Distillery Land you can find this and much more: factory tours, a well-stocked store, and available spaces for holding gatherings, events, or training seminars. .



Did you know that: ?

Vizovice's tradition of making distillates reaches back to the 16th century, but plums were introduced only at the beginning of the 18th century?

GLASS ATELIER MORAVA

Nádražní 1133, 763 12 Vizovice

+420 577 452 484

www.glass-czech.cz

49°13'7.432"N, 17°50'32.073"E

An interesting destination for visitors is the first private glass works in the Czech Republic to be built after 1989. The atelier, equipped with the



most modern technology, produces hand made decorative and artistic glass. Larger groups can get a close-up tour of the production facility, and the factory's glass shop is open to all who are looking for a unique gift from the region.

ŽELECHOVICKÉ PASTURES NATURE PARK

<http://nature.hyperlink.cz>

49°12'5.582"N, 17°47'1.496"E

The bucolic countryside of the Želechovice Pastures is accessible along a six-kilometer circuit; it focuses on the flora and fauna, orchards, and herbs. A protected mineral water spring is one of the important sites in the pastures. Among the rarer plants you will find in the park are oxlip, paradise plant, or the Martagon lily.



VIZOVICKÉ HILLS NATURE PARK

<http://nature.hyperlink.cz>

49°12'27.669"N, 17°56'33.401"E

The highest point in the forested Vizovické Hills is the peak Klášťov. Among its natural points of interest are a number of sulfuric mineral springs. The rare plants in the park include cutleaf selfheal and fringed gentian. Typical of the lower elevations are landscapes with a mosaic of smaller orchards, fields, flowering meadows and pastures, and farmsteads.

ROUTE 4: Around Vizovice

The route takes you around the Vizovice area – you will go up to the observation tower above the town, to the race track in Slušovice, to the village of Všemina, to the most well-preserved magistrate's farmstead in Wallachia, and to a unique cylinder mill which is still in operation today.

LOUČKA OBSERVATION TOWER

see page 57

SLUŠOVICE

www.slusovice.cz
49°15'12.759"N, 17°47'58.932"E

The horse-race track here is one of the four most important in the Czech Republic. The facility fulfills the conditions for the highest category A, so that breeders' races can be held here as well as classic ra-

pool, sauna, and tennis area with indoor hall. There is also horseback riding available, mountain bikes, and in the winter a 250 m ski slope with artificial snowmaking equipment.



Všemina



pical log house with gallery on the facade, and is the best-preserved structure of its kind in Wallachia. At present it contains an exhibit on the history of the village of Jasenná, the neighboring villages, and rural life in Wallachia.

SLOPNÉ – CYLINDER MILL

Slopné 148, 763 23 Slopné
☎ +420 577 138 840
☎ +420 603 844 226
49°9'22.981"N, 17°50'50.971"E

In Slopné you can get a look at a fully-functional historic cylinder mill from the 19th century. The mill, which was totally reconstructed in 1938–1942, was retired from service in 1967. In 1991, however, a descendant of the original owners restored it, and operates it as a commercial mill to this day.



Slušovice

ces, including first-category hurdle racing.

VŠEMINA

www.obecvsemina.cz
49°17'31.498"N, 17°51'46.653"E

Všemina offers year-round sports opportunities and comfortable accommodation services. Set in a beautiful valley with reservoir, it offers its guests an indoor swimming

MAGISTRATE MIKULÁŠTÍK'S FARMSTEAD IN JASENNÁ

Jasenná 60, 763 12 Jasenná
☎ +420 577 456 118
☎ +420 732 141 768
☎ +420 604 220 344
49°15'37.778"N, 17°53'43.57"E

The farmstead belonging to the fojt, or magistrate, was built in 1748 by heralded fojt Jiří Mikuláščík. The wooden, two-story building is a ty-

Important contacts

MUNICIPAL INFORMATION AND TOURIST CENTER

Městské informační a turistické středisko
nám. Míru 12, 761 40 Zlín
☎ +420 577 630 222
☎ +420 577 630 270
✉ is@muzlin.cz
www.mestozlin.cz
49°13'35.631"N, 17°39'58.552"E



You will find more information on tourist destinations and services in the Zlín Region at www.regionzlin.co.cz.

Sports and wellness facilities

SPORTS CENTER HVOZDNÁ

Sportovní areál Hvozdná
Hvozdná 355, 763 11 Zlín 11
☎ +420 577 902 501
www.rmgas.cz
49°15'19.933"N, 17°45'32.973"E

Tennis courts – outdoor and indoor, squash courts, outdoor pool, weight-lifting room

SKI LIFT JASENNÁ

Lyžařský vlek Jasenná
763 13 Jasenná
☎ +420 605 749 110
www.skijasenna.ic.cz
49°16'12.018"N, 17°53'56.382"E

Length of lift 480 m, night-time skiing, artificial snow cover, refreshments

WRC RANCH "POD VARTOVŇŮ"

WRC Ranč pod Vartovňů
Jasenná 116, 763 13 Jasenná
☎ +420 732 323 215
☎ +420 603 534 935
49°15'17.894"N, 17°54'51.128"E

Horseback-riding lessons, rides through the countryside

RANCH "NA VYHLÍDCE"

Ranč na Vyhlídce, 763 11 Lípa
☎ +420 604 384 241
www.rancnavyhlidce.zl.cz
49°11'35.553"N, 17°46'54.967"E

Riding hall, outings on horseback

DERBY GOLF CLUB SLUŠOVICE – GOLF COURSE

Dostihová
763 15 Slušovice
☎ +420 577 221 063
(playground – pizzeria Reddog)
www.dgcs.cz
49°15'21.087"N, 17°47'53.416"E

9-hole course, driving range, restaurant

RECREATION CENTER TRNAVA – SKI CENTER

Rekreační středisko Trnava
Trnava 327, 763 18 Trnava
☎ +420 577 988 212
☎ +420 731 511 747
www.rstnava.cz
49°19'2.943"N, 17°51'27.854"E

Length of lift 360 m, children's ski lift, night-time skiing, refreshments, accommodation

SKI LIFT SK SKI CLUB TRNAVA

Lyžařský vlek SK Lyžařský klub Trnava
Trnava 153, 763 18 Trnava
☎ +420 605 303 784
www.lyzari.trnava.cz
49°16'45.61"N, 17°49'34.934"E

Length of lift 302 m, night-time skiing, refreshments

RIDING CLUB KRÁSNO CHRÁMEČNÉ

Jezdecký klub Krásno
Stáje Chrámečné, Bratřejov
763 12 Vizovice
☎ +420 603 893 671
www.jkkrasno.org
49°13'11.172"N, 17°53'18.349"E

Recreational horseback riding

RECREATION CENTER REVIKA

Rekreační středisko REVIKA
Lázeňská 1035
763 12 Vizovice
☎ +420 577 452 733
www.revika.cz
49°11'49.208"N, 17°50'31.24"E

Multipurpose sports area, minigolf, accommodation

RANCH VŠEMINA

Ranč Všemina
763 15 Slušovice
☎ +420 604 420 093
www.ranc.cz
49°17'45.845"N, 17°52'19.278"E

Outings on horseback, riding hall, lessons in western-style riding, accommodation

RANCH LUCKY VALLEY

Zádveřice 8, 763 12 Vizovice
☎ +420 577 982 360
📠 +420 605 247 709
www.luckyvalley.net
49°13'26.7"N, 17°48'57.259"E

Lessons in western-style riding (by appointment), accommodation

STABLE MEVRIN

Stáj Mevrin
Zádveřice 450, 763 12 Vizovice
📠 +420 603 167 977
http://staj.mevrin.cz
49°12'57.548"N, 17°48'12.885"E

Horseback-riding lessons, outings on horseback

GOLF CLUB LÁZNĚ KOSTELEČ

Kostelec 493, Zlín-Kostelec
763 14 Zlín
☎ +420 577 914 340
www.gclkc.cz
49°15'12.538"N, 17°41'59.703"E

9-hole golf course, practice driving range, chipping green and putting green with sand trap, indoor golf

HOTEL LÁZNĚ ZLÍN-KOSTELEČ

Kostelec 493, Zlín-Kostelec
763 14 Zlín
☎ +420 577 152 111
www.hotel-kostelec.cz
49°15'12.538"N, 17°41'59.703"E

Outdoor pool with heated water, children's pool, sauna, minigolf, tennis courts, restaurant, accommodation

LASER ARÉNA ZLÍN

Břežnická 4068, 760 01 Zlín
📠 +420 608 930 370
www.laserarena.cz
49°13'4.743"N, 17°39'34.245"E

The most modern and 2nd largest laser game arena in the CR

MEADOW RANCH

Želechovice 148, Zlín-Želechovice
763 11 Zlín
📠 +420 608 822 863
49°11'43.217"N, 17°43'33.524"E

Horseback-riding lessons, outings on horseback

MUNICIPAL SPORTS HALL ZELENÉ

Městská sportovní hala Zelené
Dukelská 5413, Bartošova čtvrť
760 01 Zlín
☎ +420 577 271 502
📠 +420 737 464 110
49°13'32.894"N, 17°41'48.672"E

ROPE CENTER C.V.AK

Lanové centrum C.V.AK
Nadhumení 282, Zlín-Mladcová
760 01 Zlín
📠 +420 724 140 098
www.cvakzlin.cz
49°14'45.516"N, 17°38'34.408"E

High hurdles (14 individual, 6 team at 6–10 m high), low hurdles, 1 jump

SKI SLOPE ZLÍN

Lyžařský svah Zlín
nám. T. G. Masaryka 5144, 760 01 Zlín
☎ +420 577 589 118
www.svahzlin.cz
49°13'5.428"N, 17°40'2.897"E

Length of lift 220 m, children's tow, night skiing, artificial snow, ski service, ski lessons, refreshments

SPA ZLÍN

Lázně Zlín
Hradská 888, 760 01 Zlín
☎ +420 577 599 911
www.laznezlin.cz
49°13'18.015"N, 17°40'10.984"E

Covered pool, children's pool, steam, sauna, massage, spinning studio, fitness room, outdoor pool with wading pool; refreshments

SWIMMING CENTER LOUKY

Koupaliště Louky
Chlumská 396, Zlín-Louky, 763 02 Zlín
☎ +420 577 105 004
49°13'24.724"N, 17°36'49.889"E

Outdoor pool, children's pool, fast food refreshments

SWIMMING CENTER "ZELENÉ"

Koupaliště „Zelené“
Bartošova čtvrť, 760 01 Zlín
☎ +420 577 226 088
49°13'33.232"N, 17°41'46.028"E

Outdoor pool, children's pool, toboggan, 2 slides, children's playground, beach volleyball, restaurant, fast food refreshments

TENNIS CENTER

Mladcová 493, Zlín-Mladcová
760 01 Zlín
☎ +420 577 240 179
📠 +420 602 506 082
49°14'42.467"N, 17°38'37.46"E

6 clay courts, tennis hall, sauna, whirlpool, refreshments

TENNIS CENTER VRŠAVA

Tenisový areál Vršava
Vršava 494, 760 01 Zlín
☎ +420 577 215 496
📠 +420 737 868 638
www.tkskzlin.cz
49°14'25.839"N, 17°41'24.854"E

2 tennis halls (4 tennis courts, badminton), 4 turf courts with lighting

TENNIS CLUB SK ZLÍN

Tenisový klub SK Zlín
Vršava 5369, 760 01 Zlín
☎ +420 577 211 961
www.tkskzlin.cz
49°14'25.839"N, 17°41'24.854"E

15 clay courts, 2 small practice courts, practice wall

More information regarding horserelated tourist services see: www.hyje.cz.

ZLÍN REGION

Culture and entertainment

GALLERY MARIETTE

Galerie Mariette
Zámek Vizovice, Palackého 376
763 12 Vizovice
☎ +420 605 706 879
www.mariette.cz
49°13'10.992"N, 17°51'1.72"E

CINEMA

Kino
Masarykovo nám. 1008
763 12 Vizovice
☎ +420 577 599 191
www.vizovice.eu
49°13'19.914"N, 17°51'16.207"E

BIG CINEMA

Velké kino
náměstí Práce 2511, 760 01 Zlín
☎ +420 577 432 936
www.velkekino.cz
49°13'17.714"N, 17°39'37.352"E

CINEMA KVĚTEN

Kino Květen
Masarykova 1014, Zlín-Malenovice
763 02 Zlín
☎ +420 577 103 284
www.velkekino.cz
49°12'26.805"N, 17°35'38.978"E

GALLERY K+P SKŘIVÁNKOVÍ

Galerie K+P Skřivánkoví
Zálešná I 1779, 760 01 Zlín
☎ +420 577 437 651
☎ +420 603 463 673
49°13'56.743"N, 17°41'5.511"E

GALLERY KINCOVÁ

Galerie Kincová
Sokolská 420, 760 01 Zlín
☎ +420 577 221 708
www.galeriekincova.cz
49°13'58.951"N, 17°40'44.352"E

GOLDEN APPLE CINEMA

nám. Míru 174, 760 01 Zlín
☎ +420 571 817 255
www.gacinema.cz
49°13'35.31"N, 17°40'5.458"E

MUNICIPAL THEATER ZLÍN

Městské divadlo Zlín
třída Tomáše Bati 4091/32, 761 87 Zlín
☎ +420 577 636 111
www.divadlo.zlin.cz
49°13'30.93"N, 17°40'9.969"E

MUSEUM OF FOOTWEAR

Obuvnické muzeum Zlín
třída Tomáše Bati, 760 01 Zlín

☎ +420 577 522 225
www.muzeum-zlin.cz
49°13'25.418"N, 17°39'37.283"E

MUSEUM OF SOUTHEASTERN MORAVIA

Muzeum jihovýchodní Moravy ve Zlíně
Soudní 1, 762 57 Zlín
☎ +420 577 004 611
www.muzeum-zlin.cz
49°13'32.77"N, 17°39'47.484"E

REGIONAL FINE ARTS GALLERY IN ZLÍN

Krajská galerie výtvarného umění ve Zlíně
Dům umění, nám. T. G. Masaryka 2570
760 01 Zlín
☎ +420 577 210 662
www.kgvu.zlin.cz
49°13'8.897"N, 17°39'56.818"E

SMALL STAGE ZLÍN

Malá scéna Zlín
Štefánikova 2987, 760 01 Zlín
☎ +420 776 575 307
www.malascenazlin.cz
49°13'29.34"N, 17°40'47.861"E

Event highlights

APRIL

- Unknown Land – Festival of Travel, Zlín (www.neznamazeme.cz)

MAY

- Talentinum – international review of young concert artists, Zlín (once in two years, 2010), (www.filharmonie-zlin.cz)
- Encounter – international theatre festival, Zlín (www.divadlo.zlin.cz)
- International festival of film for children and young people, Zlín (www.zlinfest.cz)
- Extreme Moto Show, Slušovice (http://extreme-moto-show.tuning-sport.cz)
- Horse-racing days, Slušovice (www.slusovice.cz)

JUNE

- Zlínalent, Zlín (www.zlinalent.cz)
- Folk music festival, Kašava (tel.: +420 577 467 205)
- Horse-racing days, Slušovice (www.slusovice.cz)

JULY

- Tuning Auto Show Slušovice (http://auto-show.tuning-sport.cz)
- Masters of rock, Vizovice (www.mastersofrock.cz)

AUGUST

- Zlín Woodstock – music festival, Zlín (www.vlw.cz)
- Barum Rally Zlín (www.barum.rally.cz)

- International festival of brass bands and folklore ensembles Zlín FEDO (www.vdoz.wz.cz)
- Plum harvest festival, Vizovice (www.vizovicketrnkobrání.cz)

SEPTEMBER

- Horse-racing days, Slušovice (www.slusovice.cz)

OCTOBER

- Horse-racing days, Slušovice (www.slusovice.cz)

SEPTEMBER-NOVEMBER

- International music festival Harmonia Moraviae, Zlín (www.filharmonie-zlin.cz)





- 6-10) 12. Residential living in Bata's Zlín
 13. Big Cinema
 14. Sports complex
 15. Health Trail
 16. Tomáš Bata University
 17. Tomáš Bata University – Jižní Svahy
 18. Congress and university center
 19. Zlín Skyscraper – 21st administration building
 20. Museum of Footwear
 21. Bata shoe factories
 22. Zlín Chateau and the Museum of
 Southeastern Moravia
 23. Tomáš Bata Villa
 24. Forest Cemetery in Zlín
 Important contacts (pages 16-18)
 25. Municipal information and tourist center

ZLÍN REGION

Bystřice pod Hostynem

Holešov

Fryšták

Zlín

Slušovice

Vizovice

Slavičín

LEGEND

Route 2 (pages 11–13)

26. Svátá voda (Holy Water)

27. Castle Malenovice

28. Tečovice Church

29. Kostelec Spa

30. Zoological garden Zlín and Lešná chateau

31. Štípa

32. Castle Lukov

33. Lukov instructional trail

34. Vela natural monument

35. Krátký natural monument

Route 3 (pages 13–14)

36. Vizovice Chateau

37. Historic sites of the urban monument zone

38. Distillery Land

39. Glass Atelier Morava

40. Želechovické Pastures nature park

41. Vizovické Hills nature park

Route 4 (page 15)

42. Loučka observation tower

43. Slušovice

44. Všemina

45. Magistrate Mikulášik's farmstead in Jasenná

46. Slopě - cylinder mill

Important contacts (pages 16–18)

25. Municipal information and tourist center

Route 2 (pages 11–13)

26. Svätá voda (Holy Water)

27. Castle Malenovice

28. Tečovice Church

29. Kostelec Spa

30. Zoological garden Zlín and Lešná chateau

31. Štípa

32. Castle Lukov

33. Lukov instructional trail

34. Vela natural monument

35. Kráľky natural monument

Route 3 (pages 13–14)

36. Vizovice Chateau

37. Historic sites of the urban monument zone

38. Drillery Land

39. Glass Atelier Morava

40. Želechovické Pastures nature park

41. Vizovické Hills nature park

Route 4 (page 15)

42. Loučka observation tower

43. Slušovice

44. Všemina

45. Magistrate Mikuláščík's farmstead in Jasenná

46. Slopně – cylinder mill

Important contacts (pages 16–18)

25. Municipal information and tourist center

Welcome to the Otrokovice Region

The Otrokovice region lies in the broad valley of the Morava River between the eastern slopes of the Chřiby Hills and the city of Zlín. The region offers many attractive natural localities, from the Chřiby Hills nature park to the floodplain wetlands of the Morava River. The natural wonders and local historic sites are easily accessible by way of marked trails for walkers and cyclists.



An unusual angle is offered by a boat ride down the Baťa Canal, which starts in Otrokovice.

The Otrokovice region is known for its Functionalist architecture dating from the heyday of the Baťa shoe industry in Zlín, in particular the Community House in Otrokovice. Also worthy of attention are other structures from the recent past, like the early 20th-century town hall in Napajedla. Of the older monuments we



Baťa Canal



Napajedla Horse Farm



can mention the chateau in Napajedla, surrounded by its beautiful park and famous horse-breeding farm. Another famous horse-breeding farm is found in nearby Tlumačov.

In Napajedla you can also visit the museum. One of the region's most popular events is the auction and exhibition of purebred horses in Tlumačov and Napajedla, the amateur theater festival in Napajedla,

the St. Michael fall festival in Otrokovice, or the Moravian Slovakia festival and market in Spytihněv.

Other possibilities for spending a pleasant vacation are provided by several well-equipped sports facilities, including the water recreation facilities in Otrokovice and Napajedla.



Chateau in Napajedla



Chříby Hills



Tlumačov



Haná Festival in Tlumačov

Otrokovice – Home of the Baťa Canal

Otrokovice lies at the meeting place of three distinctive regions: Wallachia, the Moravian Slovakia, and the Haná; and at the junction of two rivers, the Morava and the Dřevnice. The first written mention of Otrokovice dates from the mid-12th century. At first it was the property of the church, then it became part of the Malenovice estate. After a period of independence in 1570–1649 it was part of the estate of Napajedla. The gradual transformation of a small village into a modern industrial town began in the 19th century with the arrival of the railroad. The Northern Line of Emperor Ferdinand from Vienna through Otrokovice was opened in 1841, but no station was built until 1882. After the segment Otrokovice – Zlín – Vizovice was built in

1899, Otrokovice became an important transportation hub, the importance of which grew even further with the industrial boom in Zlín. At the beginning of the 20th century the rivers Morava and Dřevnice were regulated in the area which solved the problem of flooding for a long time. Even so, a catastrophic flood in July 1997 caused Otrokovice enormous damage.

In the 1930s Tomáš Baťa bought up part of the swampy area between the rivers Dřevnice and Morava, and through an innovative method of filling in dirt raised the level of the terrain from one to three and in some places even four meters. Now a real industrial boom began in Otrokovice. On the new land Baťa's auxiliary factories and airplane manufacturer arose. For the



Did you know that: ?

the name Otrokovice means the village of the Otrok people, and that the old Slavonic name Otrok meant "boy, child, or servant"?



Church of St. Adalbert

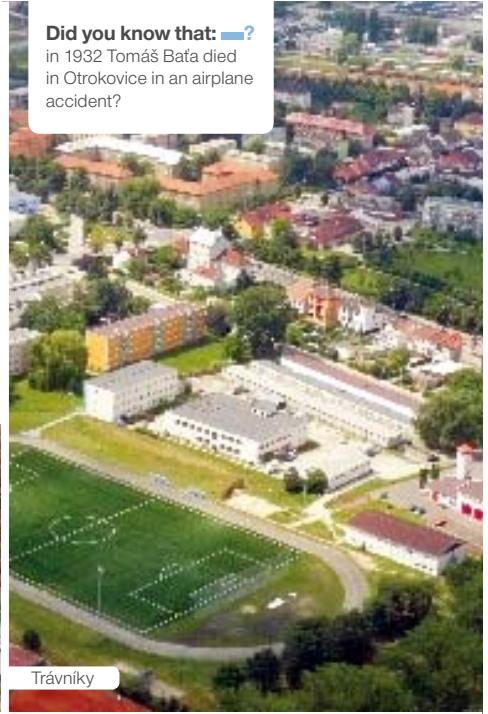


Fountain on the square

workers typical “Baťa Houses” were built. The construction of a modern industrial and residential quarter called the Baťa Quarter – on the site formerly called Bahňák (the mud flats) – was accomplished with the help of important Functionalist architects like František L. Gahura and Vladimír Karfík. In 1960 Otrokovice merged with neighboring Květkovice, and four years later it was granted the official status of a town. The town grew again in the 1970s and 1980s with the growth of the firm Barum – today Barum Continental.



Did you know that: —?
in 1932 Tomáš Baťa died in Otrokovice in an airplane accident?



Trávníky



Statue of Tomáš Baťa



Festival STETSON AND BOURBON



Night and the City

OTROKOVICE REGION

ROUTE 1: History in Otrokovice

Otrokovice has few very old historic sites, but it is still very interesting to take a walk to some of its points of interest.

CHURCH OF ST. ADALBERT

Náměstí 3. května
765 02 Otrokovice
☎ +420 577 922 337
www.farnost.otrokovice.cz
49°12'26.899"N, 17°32'15.408"E



The consecration of the church in the spring of 1995 was the end result of two years of work by volunteers and donors. The cornerstone of the

church was blessed by Pope John Paul II during his visit to Velehrad in 1990. The decoration of the modern interior of the church designed by architect Mojmír Korvas was taken up by sculptor Otýlie Šuterová (relief of St. Adalbert), woodcarver Pavel Hladký (reliefs of the Stations of the Cross), and sculptor Miroslav Boroš (reliefs of the apostles).

COMMUNITY HOUSE

Tylova 727, 765 02 Otrokovice
49°12'53.559"N, 17°30'45.583"E

The most valuable piece of architecture in Otrokovice from the Baťa era is the cleverly designed Community House and dormitory, today the Hotel Baťov. This dominating feature of Otrokovice's Bahňák (previously Baťov) quarter was built in 1933–1936 according to plans by



architect Vladimír Karfík; its layout is reminiscent of a three-bladed propeller.

STATUE OF TOMÁŠ BAŤA

in the park in front of the Community House
49°12'54.747"N, 17°30'52.762"E

In the park in front of the Community House stands a statue of Tomáš Baťa, a memorial to a great man, the



person who laid the foundations for Otrokovice's industrial prosperity. A few hundred meters from the statue is the site of the crash that claimed the life of "the world's shoe-maker" in June of 1932.

ROUTE 2: Within sight of Otrokovice

Let's have a look at the countryside. You don't have to go far in Otrokovice to find nature; it's right before you on the banks of the Morava River.

NA LETIŠTI NATURAL SITE

http://nature.hyperlink.cz
49°11'32.519"N, 17°30'57.783"E

A blind channel of the Morava River lined with great trees and brush

runs along the left bank of the river about 1.5 km south of Otrokovice railway station. Blind channels that before the river was regulated ran all along its middle course were the home of typical water and riverside species of plants and animals. The Na letišti locality is one of the last surviving remnants of this environment, and is important as a refuge for species like the common newt, and the fire-bellied toad, common

toad, green toad, edible frog, and grass snake.

THE MORAVA RIVER AND THE BAŤA CANAL

www.batacanal.cz
49°12'37.005"N, 17°30'27.17"E (Otrokovice Dock)

The historic Baťa Canal watercourse served to transport brown coal from Hodonín to Otrokovice.

Part of the canal's route leads through the channel of the Morava River, part through a man-made canal with fourteen locks. There are rentals for motorboats, paddleboats, canoes, and bicycles for riding alongside. The closest motor boat rental to Otrokovice is in Spytihněv, others in Staré Město, Veselí nad Moravou, Vnorovy, Strážnice, Sudoměřice, and Hodonín.



Bafa Canal

ROUTE 3: The beauty of Napajedla

The historic town of Napajedla with its eight thousand residents was historically the center of a large estate, of which the village of Otrokovice was a part. The importance of Napajedla is evident in the many historic buildings concentrated in the center of town, declared an urban monument zone. Let us begin with the largest – the Town Hall.

TOWN HALL

Masarykovo náměstí 89
763 61 Napajedla, www.napajedla.cz
49°10'25.547"N, 17°30'48.606"E



The neo-Renaissance town hall by architect Dominik Fey was built in 1904. This remarkable structure with its characteristic tower and gallery dominates Masaryk Square. Taking part in its decoration were some of the Moravian Slovakia's most prominent artists: Franta Úprka with his statue of St. George, the patron of Napajedla, and Jano Köhler with the building's stained-glass windows and the ceramic face of the town clock.

MUSEUM NAPAJEDLA

Palackého 94
763 61 Napajedla
☎ +420 577 942 496
www.napajedla.cz
49°10'28.166"N, 17°30'51"E



In the year 2000 a museum was opened that each season presents

a specially-prepared exhibit. Recent topics include the 110th anniversary of Napajedla's status as a town, to which it was raised in 1898.

CHURCH OF ST. BARTHOLOMEW

Masarykovo náměstí
763 61 Napajedla
☎ +420 739 692 213
www.napajedla.farnost.cz
49°10'21.599"N, 17°30'52.877"E

Completed in 1712, this church replaced an older sanctuary. Remaining from the old church are the stone statues of Sts. Peter and Paul, two Renaissance gravestones of Bedřich and Bartholoměj of Žerotín dating from 1568, and wooden sculptures of the Apostles. The picture above the main altar showing St. Bartholomew is the work of František Kančič, general director of the Vienna Academy.

NAPAJEDLA CHATEAU

Zámecká, 763 61 Napajedla
☎ +420 603 972 549
49°10'9.607"N, 17°30'45.872"E

This Late Baroque chateau with three wings and a courtyard was built by architect F. A. Grimm in the

OTROKOVICE REGION



years 1760–1769. The last owner of before World War II of this chateau was the Baťa company, which bought it in 1935. After the war the chateau went to the Fatra Company. Today it belongs to a private owner. The chateau is not open to the public, but weddings and social events are held here. The excellent chateau park in English and French style is freely accessible.

NAPAJEDLA HORSE FARM

Zámecká 582, 763 61 Napajedla

☎ +420 577 941 009

www.napajedlastud.cz

49°10'3.097"N, 17°30'51.076"E

This stud farm is famous for its English thoroughbreds. It was built in 1886 by a Viennese banker Ariste-

des Baltazzi, husband of the Countess of Stockau. The complex of original stables adjacent to the chateau park survives to this day. After Baltazzi's death his indebted widow was forced to sell the farm. The state intervened to preserve the farm, and it successfully continues to this day. The space in the middle of the

Did you know that: ?

Napajedla is the birthplace of famous people – piano virtuoso Rudolf Firkušný, general and Czech legionnaire Josef Šnejdárk, and writer Božena Benešová?

farm is used to auction off one-year-olds, and it is attended by breeders



Did you know that: ?

Napajedla gave its name to the so-called Napajedla Gate, the place where the Upper Moravian and Lower Moravian valleys meet?

from all over the world. Today the horse farm is the Czech Republic's most important producer of race horses; some 60 foals are born here each year. During the summer the horse farm provides excursions for organized groups.

ROUTE 4: Along the Baťa Canal

A comfortable bicycle circuit takes us along the northern part of the Baťa Canal by the edge of the Chřibý Hills nature park, and offers excellent views of the Morava River valley.

Otrokovice, dock, 47 → Napajedla → Pahr bek → Spytihněv, go right after the bridge, turn on 5015 → Halenkovice → right turn onto 473 → Žlutava → Otrokovice, dock

SPYTIHNĚV

www.spytihnev.cz

49°8'26.361"N, 17°29'53.357"E



Spytihněv Castle was founded by King Boleslav I in the 11th century, making it one of the oldest in the territory of today's Czech Republic.

In 1680 the original village along with the church and parish house were entirely destroyed. The new church of the Assumption of the Virgin Mary

was built in 1712. In Spytihněv the first locks separate the Bata Canal from the channel of the Morava River.

HALENKOVICE

www.halenkovice.cz

49°10'16.698"N, 17°28'22.763"E

This large village was created by the merger of several smaller hamlets named after members of the family of Jan of Rottal – Alenkovice, Eleonorovice and Kateřinice. The village was colonized around 1630 by settlers from Wallachia, but rich archaeological finds show much older settlement. The village's main feature is the church of St. Joseph. Also of value are two Baroque statues of Sts. Peter and Paul. At a crossroads on the forest trail to Kržle and Nová Dědina is a monu-



ment to the tragic death of forester Karel Mrazík, killed by poachers in 1870. He is said to have been hanged upside down with his head in an anthill.

ŽLUTAVA

www.zlutava.cz

49°12'11.553"N, 17°29'36.875"E

The village of Žlutava is known mainly for its many archeological finds, which include tools made of stone and of bronze, ceramics, flint fire-making stones, and iron hatchets. Some of these are on display at the Museum of the Moravian Slovakia in Uherské Hradiště. The grave of a warrior with sword, quiver, vessel, and spurs is on exhibit at the castle in Zlín-Malenovice.

ROUTE 5: In and around Tlumačov

The village's rich archeological heritage shows that the site of today's Tlumačov has been inhabited since the Stone Age. The town is mainly famous for its religious monuments and the Regional Horse Farm.

TLUMAČOV'S HISTORICAL SITES

www.tlumacov.cz

49°15'14.779"N, 17°30'12.28"E

The dominant feature of the town, first mentioned in the records in 1141, is the originally Gothic church of St. Martin with Renaissance tower dating from 1585. Near the church a fort was built in the late 15th century that in the 17th century was converted into a tavern, and that purpose is served by the house at no. 90 to this day. Also of historic value are the nearby parish house, the chapel behind the church, the Holy Trinity column, a

statue of St. John of Nepomuk, the cross by the hospital, or the cross near the horse farm.

REGIONAL HORSE FARM

Dolní 115, 763 62 Tlumačov

+420 577 929 085

www.hrebcinectlumacov.wz.cz

49°14'54.189"N, 17°30'3.321"E

For over 80 years Tlumačov has been famous for horses. The Re-

gional Horse farm stables quality thoroughbred foals and trotters. Traditional events such as the inspecting of the studs and mares and horse shows draw horse experts and amateurs alike. The farm fields a very successful performing team.

TLUMAČOV POOL

<http://nature.hyperlink.cz>

49°15'6.588"N, 17°29'25.754"E

On the western outskirts of Tlumačov is the natural monument Tlumačov Pond – a man-made reservoir with rare animals, especially amphibians. There are large numbers of the edible frog, as well as lake frog, common toad, European treefrog, the fire-bellied toad, the common newt, and great crested newt. The environment of the pond also offers an excellent habitat for the grass snake.



Important contacts

MUNICIPAL INFORMATION CENTRE NAPAJEDLA

Městské informační centrum Napajedla
Na Kapli 459

763 61 Napajedla

☎ +420 577 944 247

📠 +420 737 230 563

✉ infocentrum@napajedla.cz

www.napajedla.cz

49°10'25.031"N, 17°30'44.147"E

CULTURAL AND INFORMATION CENTRE TLUMAČOV

Kulturní a informační středisko
Tlumačov

nám. Komenského 170

763 62 Tlumačov

☎ +420 577 929 023

📠 +420 724 368 378

✉ vedoucikis@tlumacov.cz

www.tlumacov.cz/kis

49°15'14.315"N, 17°29'38.983"E



Sports facilities

MULTI-PURPOSE SPORTSGROUNDS

Komenského ul.

763 61 Napajedla

☎ +420 603 510 533

www.napajedla.cz

49°10'19.861"N, 17°30'49.43"E

Multi-purpose sportsgrounds
(soccer, basketball, volleyball, tennis)

RECREATION CENTRE PAHRBEK

Rekreační středisko Pahrbek
Napajedla 735, 763 61 Napajedla

☎ +420 577 943 554

http://web.quick.cz/pahrbek

49°9'27.652"N, 17°30'43.918"E

Natural Pool, sports area, restaurant,
accommodation (cabins, camp)

MUNICIPAL SPORTS HALL

Městská sportovní hala

765 02 Otrokovice

☎ +420 577 927 018

📠 +420 604 708 480

49°13'13.698"N, 17°30'35.43"E

All types of indoor sports

MUNICIPAL SWIMMING POOL

Městské koupaliště

Mánesova ul., 765 02 Otrokovice

☎ +420 577 926 664

📠 +420 604 708 480

49°13'10.751"N, 17°30'32.462"E

Heated pool (40 x 20 m) and
wading pool, toboggan, beach-
volleyball court and football-tennis,
refreshments

RECREATION AREA ŠTĚRKOVISŤE

Rekreační oblast Štěrkoviště

765 02 Otrokovice

☎ +420 577 926 189

📠 +420 604 708 480

49°13'37.574"N, 17°30'46.308"E

Gravel-pit lake – toboggan, sports
area, minigolf, boats and paddle-
boats, refreshments

TENNIS COURTS TJ JISKRA OTROKOVICE

Tenisové kurty TJ Jiskra Otrokovice

Nový stadion 1297

765 02 Otrokovice

☎ +420 728 724 038

www.jiskra.otrokovice.cz

49°13'17.338"N, 17°30'28.89"E

7 tennis courts, 2 practice courts,
refreshments

TENNIS HALL, MINIGOLF

Hotel Rottal, Zlínská 172

765 02 Otrokovice

☎ +420 577 591 111

www.hotelrottal.cz

49°11'55.648"N, 17°32'27.77"E

2 tennis courts with year-round use,
minigolf on the roof of the hotel
(9 holes)

RECREATION AREA SKLENÍKY SPYTIHNĚV

Rekreační areál Skleníky Spytihněv

763 64 Spytihněv

☎ +420 577 943 071

www.rmgas.cz

49°8'2.428"N, 17°30'21.52"E

Accommodation, tennis, outdoor
swimming pool, sauna, go-carts



Recreation area Štěrkoviště in Otrokovice

Culture and entertainment

MUSEUM NAPAJEDLA

Muzeum Napajedla
Palackého 94
763 61 Napajedla
☎ +420 577 942 496
www.napajedla.cz
49°10'28.166"N, 17°30'51"E

NAPAJEDLA CINEMA

Kino Napajedla
Na Kapli 459
763 61 Napajedla
☎ +420 577 944 247
www.napajedla.cz
49°10'25.02"N, 17°30'44.529"E

CINEMA OTROKOVICKÁ BESEDA

Kino Otrokovická Beseda
Náměstí 3. května 1302
765 02 Otrokovice
☎ +420 577 118 100
www.besedaotrokovice.cz
49°12'24.454"N, 17°32'11.566"E

Event highlights

MARCH

- Forbina – non-competitive review of amateur theatre ensembles from Czech Republic, Otrokovice

APRIL

- Welcoming Spring – main square in Otrokovice
- Festival of amateur theatre ensembles, Napajedla

MAY

- May Festival – folk festival with program, Otrokovice

JUNE

- Bicycle race “100 times around the Community House”, Otrokovice
- Haná Region Day – folklore festival (once in two years, 2010), Tlumačov (tel.: +420 577 929 023, www.tlumacov.cz)

- Exhibit of horses from stables in Moravia and Silesia, Tlumačov (tel.: +420 577 929 085, www.hrebciectlumacov.wz.cz)

AUGUST

- Friendship Culture Day – international music encounter with partner towns (Otrokovice, Dubnica n. Váhom, Zawadskie), Otrokovice
- Moravian paths – meeting of ethnographic areas, Napajedla

SEPTEMBER

- Folklore encounter of three regions – a get-together of folklore ensembles from Valašsko, Haná and Horňácko regions, Otrokovice
- St. Michael's Festival, Otrokovice
- St. Wenceslas Festival, Napajedla

OCTOBER

- STETSON AND BOURBON – international festival of music from the American South (blues-rock festival with bands from Czech Republic, Hungary, Poland, and Slovakia), Otrokovice

NOVEMBER

- Otrokovice Jokesters' Festival – festival of humor and wine, Otrokovice
- Lighting the Christmas Tree, Otrokovice
- Napajedla Horseshoe – country festival (once in two years, 2009), Napajedla

DECEMBER

- Christmas carols from three countries – caroling under the Christmas tree, Otrokovice

(for more information on events in Napajedla call: +420 737 230 565, www.napajedla.cz)

(for more information on events in Otrokovice call: +420 571 118 100, www.besedaotrokovice.cz)



OTROKOVICE

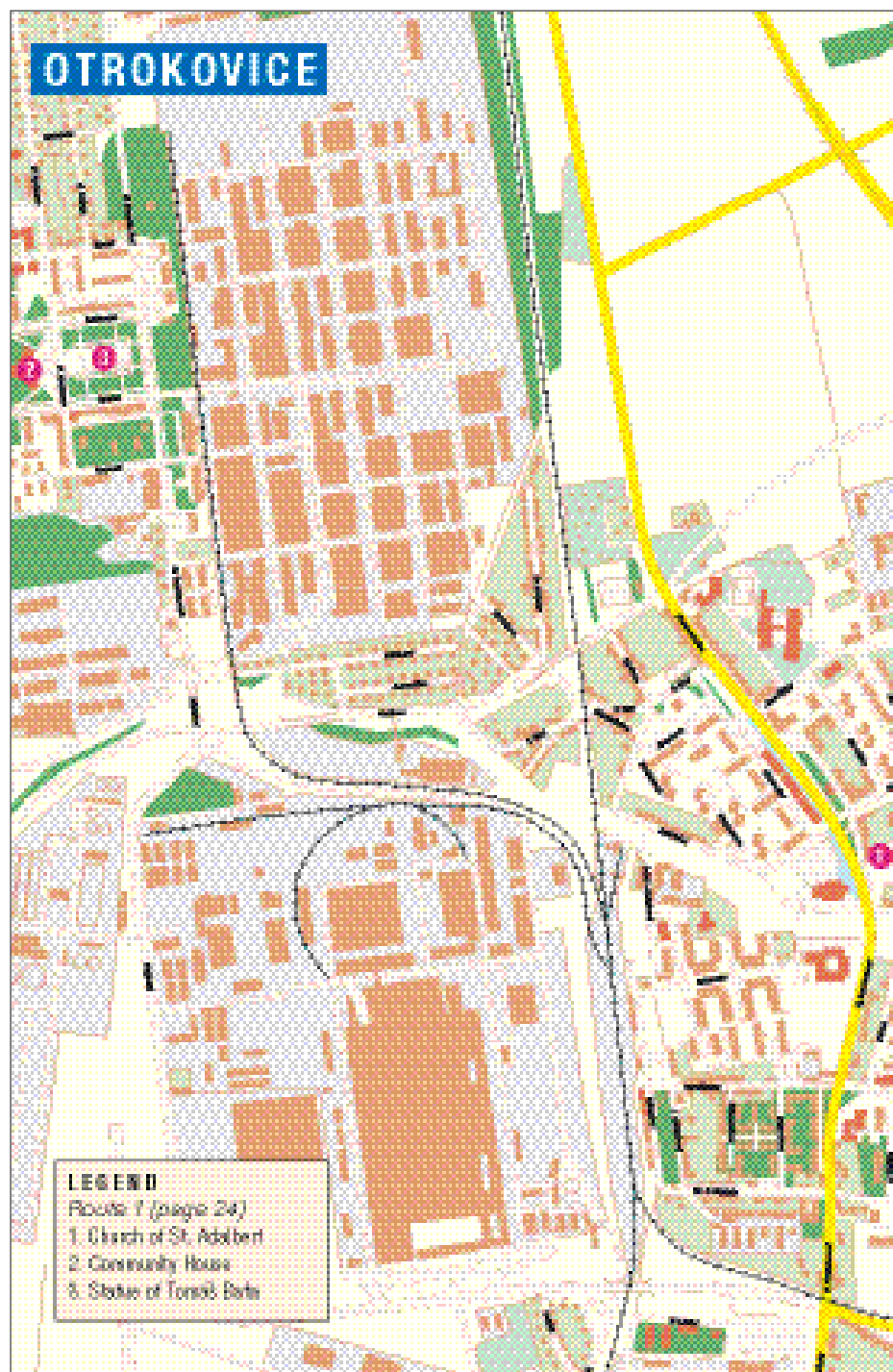
LEGEND

Route 1 (page 24)

1. Church of St. Adalbert

2. Community House

3. Statue of Torst's Bats





Welcome to the Luhačovice Region

The Luhačovice region is a favorite destination of both Czechs and foreigners who come for the famous healing springs of Luhačovice, the natural beauties of the White Carpathians and Vizovice Hills, and the colorful folk culture and folk architecture of the Zálesí area.

The region's main attraction is Moravia's largest spa town of Luhačovice. The town's ensemble of

buildings by architect Dušan Jurkovič is the region's most famous – highlighted by the Jurkovič House or the Jestřábí House.

Outside of Luhačovice you can visit important religious monuments such as the churches in Velký Ořechov or Malenisko, a picturesque pilgrimage site near Provodov. Also worthy of interest is the region's folk architecture, for example the farmstead in Kaňovice,



Jurkovič House and Colonnade



or the several castle ruins you can encounter while walking through the area's deep forests.

The Luhačovice Zálesí is a region full of cultural life. Among the events taking place there are the international music festival "Janáček and Luhačovice" or the Song and Dance international children's folklore festival.

All year round Luhačovice region is a favorite place to spend a vacation. There are excellent opportunities for hiking and bicycle tourism, as well as a number of well-equipped sports facilities.



Kaňovice



Fountain on Spa Square



Opening of the Springs



White Carpathians

Luhačovice – A Famous Spa Tradition


Moravia's largest spa town, Luhačovice, is famous for its healing mineral springs, the clean and beautiful natural surroundings of the Vizovice Hills and the White Carpathians, and the unique architecture with the unmistakable vernacular of Dušan Jurkovič. His structures form the heart of the urban monument zone. You will find a number of other monuments reflecting the rich history of this place. The first mention of Luhačovice dates from the early 15th century, but the nearby castle Engelsberg was built to protect the Moravian interior against the ravages of the Tatar hordes back in the mid-13th century. Later it was replaced by the castle Starý Světlav. At first Luhačovice belonged to the Šternberks who dwelt in Lukov; later the place was

owned by the Bartodějs, and finally in 1629 the town was bought by Gabriel Serenyi, whose family shaped the fate of the town until 1945. The Serenyi clan are responsible for the building of the chateau from first half of the 18th century, and the development of the spa at the end of the 18th and entire 19th centuries. We can meet with the family's members even today, metaphorically speaking, for they gave their names to many of the local springs. The modern development of the spa took place at the turn of the 20th century thanks to the Luhačovice Spa company and Dr. František Veselý who headed it.

Today's Luhačovice, as a typical spa town, is host for much of the year to a number of interesting cultural



Dr. Šťastný Fountain

Did you know that: ? in Luhačovice 15 thousand liters of healing waters rise to the surface each hour?



Opening of the Springs



Bedřich Smetana House and Brussels Fountain



events, from the Opening of the Springs to the music festival Janáček and Luhačovice. The cultural atmosphere is also enhanced by the Museum of the Luhačovice Zálesí, several galleries, the Spa Theater, and the Elektra Culture House.

Luhačovice is one of the departure points for exploring the White Carpathians protected biosphere reserve and the Vizovické Hills nature park. Each year the town accommodates 30,000 guests who come for purposes of treatment, relaxation, active recreation, and congress tourism.



Did you know that: ■■■■■?

the most famous Luhačovice spring Vincentka was named after Vincenc Serenyi (1751–1810), the spa's founder?



Music Festival Janáček and Luhačovice



Alpská růže Villa



Jurkovič House and Colonnade

LUHAČOVICE REGION

ROUTE 1: Spa highlights

There are a number of historical sites and points of interest at Luhačovice spa. We can start our walk at the center of town, by the town's most famous and probably the most beautiful structure, the Jurkovič House.

JURKOVIČ HOUSE

Lázeňské náměstí 109
763 26 Luhačovice
49°6'23.72"N, 17°45'41.911"E

In 1902 Dušan Jurkovič completed his reconstruction of the Jan's Spa House and older IInd class baths, which he joined into a single unit and raised by one floor and an attic. The entire building, which dominates Spa Square, he decorated outside and inside with bright colors. In 1947 the structure was named the Dušan Jurkovič House. In 2002 reconstruction



Jurkovič House

was completed, and facilities were expanded to include pool, sauna, and restaurant.

AMANDKA

the Great Colonnade
49°6'24.4"N, 17°45'45.279"E

The Amandka spring, which can be found in the middle of the Great Colonnade, was first led into a fountain at the end of the 17th century, and according to written records is the oldest of the Luhačovice springs. Its present shape dates from 1947 to 1948 and the construction of the Great Colonnade. As you can see the spring does not gush above the surface. Its level dropped after the new Vincentka 2 was drilled in 1988. The water from this fountain is no longer used.

VINCENTKA

the Great Colonnade
49°6'26.853"N, 17°45'46.303"E

In the middle of the Great Colonnade you will find the most famous of

Spring. In 1792 it got its present name Vincentka. The present Vincentka hall was part of the con-



struction of the new colonnade in 1947–1948. The spring is led into a fine fountain and to a counter where it can be warmed up. Water from the Vincentka is used for the drinking cure and inhalation.

JESTŘABÍ

Leoše Janáčka 238
763 26 Luhačovice
49°6'38.373"N, 17°45'53.529"E

This villa was built in 1903 according to design by D. Jurkovič. The free-standing building is composed nearly symmetrically. At present it



serves as a comfortable spa hotel with well-furnished single and double rooms.

WATER THERAPY INSTITUTE

Leoše Janáčka 97
763 26 Luhačovice
49°6'38.01"N, 17°45'57.247"E

Luhačovice's springs, the Vincentka. The spring was constructed in 1680 and was called the Main

The Institute was founded in 1902 with the reconstruction of the Jes-
třáb Mill. D. Jurkovič preserved the
stone ground floor and first floor
of dried brick, which he raised by
a timbered second floor, and put
a new roof over the entire struc-
ture. He built the nearby Sun Spa
complex in the same year.

MUSIC PAVILION

Spa park by Jestrábí
49°6'37.33"N, 17°45'51.079"E

The nearby pavilion dates from
1903, and was originally located
on the Spa Square by Jan's Spa



House. In its heyday the gazebo
for the spa orchestra featured mu-
sic every day; today it is used in the
summer for occasional concerts
and relaxation.

VILLA VLASTIMILA

Betty Smetanové 244
763 26 Luhačovice
49°6'46.089"N, 17°45'52.417"E

This villa was one of the first struc-
tures that gave momentum to the
building of the Prague Quarter. The
Vlastimila was to serve as a miniati-
ure model for the building of Jurko-

vič's own villa in Brno-Žabvořesky. In
1904–1905 composer Leoš Janá-
ček sketched his opera "Fate" there,
and in 1917 he wrote his "Diary of
the Disappeared" at this villa.



VILLA VALAŠKA

Betty Smetanové 388
763 26 Luhačovice
49°6'47.628"N, 17°45'53.847"E



A free-standing three-story building
with an addition of a mansard roof
and an octagonal central tower, built
next to the villa Vlastimila by archi-
tect Dušan Jurkovič in 1907.

BEDŘICH SMETANA HOUSE AND BRUSSELS FOUNTAIN

Lázeňské náměstí 308
763 26 Luhačovice
49°6'31.22"N, 17°45'45.189"E

This four-story Art Nouveau building
was designed by E. Králík and built
in 1908–1910. In 1960 a fountain
by Jan Kavan was brought to the
site from the EXPO 58 World's Fair
in Brussels.

OTTOVKA

Spa park
49°6'20.832"N, 17°45'30.602"E

The Ottovka Fountain gushes 10
m higher than the other springs
and is the town's third most fa-
mous spring. In 1929 a circular
pavilion was built near the spring.
Since 1937 it has flowed into a

small fountain near the pavilion.
A vaulted stone cave was added
in 1939.

LUHAČOVICE REGION

ROUTE 2: Sightseeing around the town

Interesting sites can be found outside the spa zone as well. We can start our tour of the town at the chateau.

CHATEAU AND STATUE OF ST. GOTHARD

Masarykova 76
763 26 Luhačovice
49°5'47.095"N, 17°44'51.671"E

The Baroque chateau dates from the 18th century, the tower from the first half of the 18th century. The chateau was renovated in the 20th century, and at present serves as a youth center. In a corner of the



and Unknown Luhačovice, placed in the new spaces of the Electra House, presents Luhačovice as a center of traditional folk culture of the Luhačovice Zálesí microregion, as a place of healing waters and

texture. It was designed by Prague architects Brix and Franta. The author of the wooden relief of the Holy Family is Marek Trizuliak.



ST. JOSEPH SPRING

by the Church of the Sacred Family
49°6'5.214"N, 17°45'27.491"E

A powerful new spring was discovered near the church in 1994 through exploratory drilling. Six years later, in 2000, the spring was completed and put into use for carbon dioxide



chateau garden stands a sculpture of St. Gothard with a picture of St. Florian.

MUSEUM OF THE LUHAČOVICE ZÁLESÍ

Masarykova 950, 763 26 Luhačovice
☎ +420 577 132 883
www.muzeum-zlin.cz
49°6'2.583"N, 17°45'31.883"E

The museum is the place to discover the history and cultural tradition of the region around Luhačovice. The exposition called The Known

prosperous spa industry, and a unique urban area that has grown up between the village and the spa.

CHURCH OF THE SACRED FAMILY

Pod Kamennou 1000
763 26 Luhačovice
☎ +420 577 133 897
www.luhacovicefarnost.cz
49°6'5.668"N, 17°45'25.814"E

The Church of the Sacred Family, consecrated in 1997, is a prime example of modern church archi-

baths and for the drinking therapy at the Sanatorium Miramare. At the same time, in May 2000, a fountain by Jan Leitgeb was installed.



OTHER POINTS OF INTEREST

TENNIS PAVILION

Spa park by Ottovka
49°6'21.685"N, 17°45'32.015"E

This small wooden structure on a high stone base by architect Skřivánek from 1924–1926 has survived without major changes, and has served its original purpose for more than 80 years.

BUST OF LEOŠ JANÁČEK

in the park above the inhalatorium
49°6'19.508"N, 17°45'39.235"E



This bust of marble and bronze was made in 1954 by Karel Pokorný in honor of the world-famous music composer, who was a regular guest at Luhačovice spa.

CHALOUPKA (COTTAGE)

Dr. Palka Blaho 126
763 26 Luhačovice
49°6'20.985"N, 17°45'43.831"E



The reconstruction of the Kitchen House into a small residential villa was carried out in 1902 by D. Jurkovič at his own expense. The cottage stands on a wooded slope above the Jurkovič House; it combines a brick lower floor with a rustic wooden upper floor and balconies. The roof with its peaked dormers and gables, like the Jurkovič House, is strongly influenced by traditional Carpathian architecture. The cottage is in very fine condition, and serves as lodging

CHAPEL OF ST. ELIZABETH

Lázeňské náměstí
49°6'22.275"N, 17°45'42.719"E

The chapel on Spa Square was built at the end of the 18th century and is the oldest building in the spa center.



STATUE OF MUDR. FRANTIŠEK VESELÝ

Lázeňské náměstí
49°6'26.179"N, 17°45'45.377"E

The statue on Spa Square was made from stone and marble by Franta Úprka in the early 20th century. Veselý points downward to the

springs, reminding us of the natural wealth of Luhačovice.

VILLA ALPSKÁ RŮŽE (ALPINE ROSE)

Lázeňské náměstí 170
763 26 Luhačovice
49°6'24.232"N, 17°45'36.454"E

Built in 1883–1884 in Swiss style.

KRYSTAL

Masarykova 152
763 26 Luhačovice
49°5'57.717"N, 17°45'22.71"E



Constructivist house on Masaryk Street, built of concrete, metal, and clad in travertine tiles, dates from 1935.

ALOISKA AND SPRING OF DR. ŠTASTNÝ

49°6'7.519"N, 17°45'52.973"E
(Aloiska spring)
49°6'17.94"N, 17°45'35.744"E
(spring of Dr. Štastný)

The local springs are Luhačovice's greatest treasure. Some are freely accessible, like the Aloiska or Dr. Štastný's Spring. When the latter was discovered in 1929, it produced a sensation because the water shot from it to a height of nearly 30 m, which earned it its original name – the Geyser. The Aloiska is one of the oldest springs in Luhačovice; it was known already in 1770.

LUHAČOVICE REGION

ROUTE 3: A walk to Pozlovce

The area around Luhačovice is crisscrossed by a network of marked trails and paths, from which you can choose according to difficulty and interest. One of the favorite outings leads to the neighboring village of Pozlovce. The water reservoir here provides many opportunities for recreation. We can start by way of Lázeňské náměstí past the Brussels Fountain and along Leoš Janáček Street.

VILLA REGIA

Leoše Janáčka 270
763 26 Luhačovice
49°6'43.027"N, 17°45'55.268"E

This villa was built in historicist style by architect František Sander in 1906. It is decorated with a sgraffito of a bagpipe-player, and the motif is accompanied by the motto: Who gives his heart courage will find happiness.



Villa Regia

VILLA PRACNER

Leoše Janáčka 269
763 26 Luhačovice
49°6'44.492"N, 17°45'56.235"E

The neighboring villa, built in 1906 in historicist style by architect Vladimír Fischer, is decorated on the front

side by sgraffito showing a weaver and a reader. On the front side of the tower is sgraffito depicting a rider on a white horse.



AUGUSTINIAN HOUSE

A. Václavíka 241
763 26 Luhačovice
49°6'50.261"N, 17°46'6.159"E

This house was built in 1902–1904 according to designs by Vladimír Fischer for the Augustinian mo-

ner Leoš Janáček, who stayed here around twenty times. During his stay here in 1926 he composed his famous Glagolitic Mass.

SAMOROSTLÁ FAMILY HOUSE

A. Václavíka 381
763 26 Luhačovice
49°6'57.925"N, 17°46'4.781"E



This one-story rustic cottage from the early 20th century was strongly inspired by folk architecture.

POZLOVCE

www.pozlovce.cz
49°7'45.246"N, 17°46'8.799"E

The township of Pozlovce is among the ten areas with the best natural environment in the Czech Republic. The forested landscape around forms an intermediate zone between hilly Wallachia and the flatlands of the Moravian Slovakia. In the area of services Pozlovce is connected



to the spa at Luhačovice with its rehabilitation centers, hotels, restaurants, and cafes. It is also possible



to rent a boat or a mountain bike, go horseback riding over the terrain, or hire a horse-drawn carriage. Visitors can have a massage, spa treatment, sauna, covered and outdoor pool, minigolf and tennis courts. The main feature of the village is the 16th-century church of St. Martin, which was

renovated in Baroque style during the 18th century.

LUHAČOVICE RESERVOIR

www.pozlovice.cz
49°7'28.507"N, 17°46'46.261"E



The colorful landscape around Pozlovice is complemented by a water reservoir, the first purpose of which was to prevent flooding. Today it is also used for purposes of recreation. It took 18 years to build – construction was interrupted by World War one. It was finally completed in 1930. The dam is not made of concrete but of well-packed earth. It is famous as a fishing hole, with spring and autumn angling competitions a favorite of both local and foreign anglers.

We can return to Luhačovice by way of our favorite red-marked trail along Štávnice creek, or by some other marked path of our choosing. More demanding hikers will enjoy the 17 km D. Jurkovič circuit.



Luhačovice Reservoir

LUHAČOVICE REGION

ROUTE 4: Castles and ruins around Luhačovice

The route leads north out of Luhačovice along the ridge of the Vizovice Hills, where the deep forest hides ancient castle ruins, and a popular pilgrimage place with a miraculous spring.

HORNÍ LHOTA

www.horni-lhota.cz
49°9'20.19"N, 17°48'8.339"E



The village's dominant feature is the church of St. Diviš. The altar picture is by the famous Moravian Slovakia painter Jožka Uprka. A noteworthy example of folk architecture is the former water mill at house no. 16, one of the area's historical structures. Another unique piece of historic building is the farm house at no. 29.

SEHRAD

www.horni-lhota.cz
49°9'48.685"N, 17°47'41.277"E

Above Horní Lhota are the remnants of the castle Sehrad, also known as Sehradice, Engelsberk, or Tetov, which date from the mid-13th century. This heavily fortified castle with its estate was the lien of the Bishops of Olomouc. Around 1400 the Cimburks ruled here; after the Hussite Wars the Hungarian warlord Pankrác from Svatý Mikuláš. The castle

was abandoned in the 16th century. You can still see the remnants of its ditches and ramparts in the terrain.

STARÝ SVĚTLOV

www.obec-podhradí.cz
49°9'5.903"N, 17°45'45.449"E

Near the village of Podhradí you can see the remnants of the medieval castle Starý Světlov from the 14th century.

PROVODOV – MALENISKO

763 45 Provodov
☎ +420 577 901 990
49°9'1.378"N, 17°44'52.167"E

On the site called Malenisko stands the dominating feature of Provodov, the pilgrimage church of the Virgin Mary of the Snows from 1750. The church with its statue of the Virgin Mary in the front facade is powerful for its architectural purity and fantastic position. From the church leads a Stations of the Cross to a chapel with a spring. The water is said to have miraculous powers. According to legend the spring appeared to the local miller's wife in a dream, and the water healed her sight. When it healed Count Sereniyi in the

same way, he had the chapel of the Virgin Mary of the Snows built on the site and consecrated in 1735. Pilgrims began to arrive from near

Did you know that: ?

the probable reason for the end of castles Starý Světlov and Sehrad was the fact the robbers who inhabited it so plundered the surrounding area that the Moravian nobility had no choice but to buy the castles from them and have them torn down?

and far, and Malenisko became a famous pilgrimage destination. The main pilgrimage is held on a Sunday around the holy day of the Virgin of the Snows (5 August).

PROVODOV

www.provodov.cz
49°9'34.621"N, 17°44'10.746"E

Among the interesting monuments in this village is the Baroque statue of St. John of Nepomuk from 1744 standing on the town commons, and several rustic buildings at no. 22 with food-storage huts that were typical of this area, and no. 33 whe-



Church of the Virgin Mary of the Snows

re there is a house of the old type with a dwelling and outbuildings; unfortunately, it has been modernized.

RÝSOV

www.provodov.cz
49°8'57.633"N, 17°43'50.241"E

The humble remnants of a small cliff castle called Rýsov date from around the mid-13th century. The castle was abandoned at the end of the 15th century, and by 1517 it was desolated. Its age and character make it a unique monument of its kind. On the northern side of



the hill you can see evidence of a prehistoric fort, and directly within the castle is the massive sandstone formation Čertův kámen (Devil's Rock).



ČERTŮV KÁMEN NATURAL SITE

<http://nature.hyperlink.cz>
49°8'56.32"N, 17°43'47.58"E

The rock formation near Provodov called Čertův kámen (Devil's Rock) was part of the castle Rýsov, evidence of which is found in the square openings for setting the wooden beams of a fortification. On the upper flat surface

you can see chipped indentations for the lower frame of a wooden structure; this was evidently a tower. The site was declared a nature reserve to protect this isolated leaning outcropping of sandstone and conglomerate rock of the Magnara Flysh.

You can return to Luhačovice by the yellow trail through Pozlovce.



Vizovické Hills

LUHAČOVICE REGION

ROUTE 5: Historical sites and natural beauty of the Luhačovické Zálesí

This route takes us to the folk architecture and nature sites in the hilly area to the west of Luhačovice.

VELKÝ OŘECHOV

763 09 Velký Ořechov
+420 731 621 178
(Roman Catholic parish Velký Ořechov)
www.velkyorechov.cz
49°6'36.151"N, 17°40'3.567"E

The imposing church of St. Wenceslas is one of the region's most prominent religious monuments. It was built in 1690 by an architect influenced by the work of Domenic Martinelli. The church was restored after 1791 when most of the village burned down; the bells were saved however. Cracks in the church's ceiling are the result of an earthquake in 1821.



DOBRKOVICE

www.dobrkovice.cz
49°5'54.034"N, 17°39'36.745"E

The large Baroque statue of St. John Nepomuk from 1744 is one of the best-quality works of sculpture in the region. It stands at the crossroads to Uherský Brod and Velký Ořechov.

KAŇOVICE

www.kanovice.cz
49°6'32.31"N, 17°41'57.891"E

The village's most prominent feature is the chapel consecrated to the Virgin Mary Intercessor of all Mercy, built by the local inhabitants



a two-story farm storage barn with gallery at no. 21.

NATURAL MONUMENT UHLISKA

<http://nature.hyperlink.cz>
49°8'56.156"N, 17°40'27.825"E

Not far from the village of Doubravy you will find valuable wetland meadows with more than 140 species of plants, including rare orchids such as broad-leaved marsh orchid and early marsh orchid. Rare butterflies abound as well, such as large blue and dusky large blue. The clean water in the creek and pools give life to fire salamander, common newt and alpine newt, common frog, and moor frog, or the rare yellow-bellied toad, and the creek also hosts river crayfish. Uhliska is also inhabited by the rare viviparous lizard and smoo-

in 1951–1952. There are a number of traditional cultural monuments in the village – a memorial cross by the chapel, an extraordinarily well-preserved farm settlement at no. 23, and three granaries at nos. 5, 18, and 19. Farmhouse no. 19 is being remodeled to house an exposition on dwelling and household furnishing through the centuries.

HŘIVÍNŮV ÚJEZD

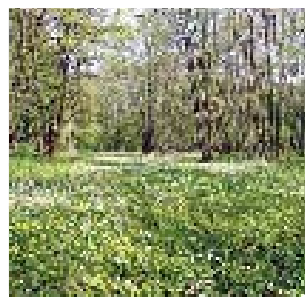
www.hrivinuvjezd.cz
49°7'14.595"N, 17°41'27.298"E

An interesting relic of the region's traditional architecture are the outbuildings at houses no. 11 and 19 dating from the mid-19th century. Especially the house at no. 19 represents an advanced specimen of this type of structure. The dwelling and adjacent outbuildings create a well-organized unit.

DOUBRAVY

www.doubravy.eu
49°8'29.282"N, 17°39'56.659"E

This village features a rustic wooden bell tower, typical of villages in the Luhačovické Zálesí, as well as



th grass-snake. Of the birds we can observe wyreneck and red-backed shrike.

BISKUPICE

www.biskupiceuluhacovic.cz
49°5'9.792"N, 17°42'26.526"E

The dominant feature of Biskupice is the modern chapel of the Virgin Mary Ascendant from 1997, which the local churchgoers helped to build.

Important contacts

MUNICIPAL INFORMATION CENTER LUHA INFO

Městské informační středisko Luha info
Masarykova 950
763 26 Luhačovice
☎ +420 577 133 980
☎ +420 577 132 341
✉ luhainfo@mesto.luhacovice.cz
www.luhacovice.cz
49°6'2.563"N, 17°45'32.055"E

TRAVEL AND INFORMATION AGENCY LUHANKA

Luhačovická cestovní a informační agentura Luhanka
nám. 28. října 441
763 26 Luhačovice
☎ +420 577 681 103
✉ luhanka@lazneluhacovice.cz
www.lazneluhacovice.cz
49°6'6.534"N, 17°45'37.306"E

TOWNSHIP POZLOVICE

Městys Pozlovice
Hlavní 51, Pozlovice
763 26 Luhačovice
☎ +420 577 132 212
✉ mestys@pozlovice.cz
www.pozlovice.cz
49°7'41.133"N, 17°46'9.726"E

Sports and wellness facilities

RECREATION CENTRE BŘEZŮVKY

Rekreační středisko Březůvky
763 45 Březůvky
☎ +420 777 758 160
☎ +420 777 758 162
www.ikaria-zlin.cz
49°10'7.649"N, 17°42'8.786"E

Indoor riding hall, horseback riding, camping with horses, accommodation

LUHATURF

Slunná ul.
763 26 Luhačovice
☎ +420 603 336 482
49°6'12.344"N, 17°45'8.327"E

Recreational horseback riding, horseback-riding lessons

MUNICIPAL SWIMMING HALL

Městské koupaliště
Solné 524
763 26 Luhačovice
☎ +420 577 131 287
49°6'3.623"N, 17°45'47.947"E

Swimming pool, wading pool

RESIDENCE AMBRA

Solné 1055
763 26 Luhačovice
☎ +420 577 154 111
www.hotel-ambra.cz
49°5'52.555"N, 17°46'9.183"E

Indoor swimming pool, whirlpool, sauna, wellness services, massage

SPA HOTELS MIRAMARE

Lázeňské hotely Miramare
Bezručova 338, 763 26 Luhačovice
☎ +420 577 659 111
www.miramare.luhacovice.cz
49°6'10.369"N, 17°45'25.05"E

Indoor swimming-pool, wellness services, massages

SPA LUHAČOVICE, INC.

Lázně Luhačovice, a. s.
Lázeňské náměstí 436
763 26 Luhačovice
☎ +420 577 682 111
www.lazneluhacovice.cz
49°6'29.861"N, 17°45'44.142"E

Rehabilitation and wellness therapy, and massages can be booked also on an out-patient basis.

SPA TREATMENT HOUSE PRAHA

Lázeňský léčebný dům Praha
Leoše Janáčka 379
763 26 Luhačovice
☎ +420 577 131 102-3
www.luhacovicepraha.com
49°6'51.809"N, 17°46'4.54"E

Indoor swimming pool, fitness centre, sauna

SPORTS CENTRE RADOSTOVA

Sportovní centrum Radostova
Hradisko 1029, 763 26 Luhačovice
☎ +420 577 134 112

www.radostova.cz
49°5'32.347"N, 17°45'12.55"E

Sports hall, bowling, sauna, fitness centre, ball court with artificial surface, tennis court, air-dome covered sports hall, restaurant, accommodation

TENNIS COURTS TK 2000 LUHAČOVICE

Tenisové kurty TK 2000 Luhačovice
Lázeňské náměstí 427
763 26 Luhačovice
☎ +420 731 576 994
49°6'21.685"N, 17°45'32.015"E

5 clay courts, refreshments

HOTEL ADAMANTINO

Pozlovice 337, 763 26 Luhačovice
☎ +420 577 131 082
www.adamantino.cz
49°7'30.81"N, 17°46'36.619"E

Indoor swimming pool, sauna, whirlpool, tennis court, ping-pong

HOTEL VEGA

Pozlovice 99, 763 26 Luhačovice
☎ +420 577 131 216
www.hotelvega.cz
49°8'16.231"N, 17°46'53.671"E

Indoor facilities: squash court, swimming pool, fitness room, ping-pong, sauna, whirlpool.
Outdoor facilities: tennis court, minigolf, badminton, petanque

LUHAČOVICE REGION

RIDING STABLE BODLÁKOVI

Jezdecká stáj Bodlákovi
ATOS – riding stable
Pozlovice, 763 26 Luhačovice
☎ +420 731 616 616
www.jsbodlakovi.wbs.cz
49°7'26.83"N, 17°45'41.223"E

Horseback-riding lessons, ponies,
fun rides through open countryside

SPA HOUSE NIVA I

Lázeňský dům Niva I
Antonína Václavika 340, Pozlovice
763 26 Luhačovice
☎ +420 577 131 284
www.niva.cz
49°7'13.022"N, 17°46'2.587"E

Outdoor swimming pool

SPORTS AREA GOLF

Sportovní areál Golf
Jurkovičova alej 77, Pozlovice
763 26 Luhačovice
☎ +420 603 366 611
☎ +420 577 132 296
www.golf-luhacovice.cz
49°6'59.801"N, 17°46'7.575"E

Minigolf, bowling, tennis courts,
ball-court (football-tennis, volleyball),
air-dome covered hall

SWIMMING CENTRE

Koupaliště, 763 23 Sehradice
☎ +420 577 138 245
www.sehradice.cz
49°8'41.233"N, 17°50'13.295"E

Swimming pool, refreshments



Culture and entertainment

ART GALLERY

Malá Kolonáda
763 26 Luhačovice
☎ +420 577 132 719
www.artgalleryluhacovice.wz.cz
49°6'27.422"N, 17°45'46.902"E

SPA THEATRE

Lázeňské divadlo
Dr. Palka Blaho 289
763 26 Luhačovice
☎ +420 577 132 145
49°6'17.795"N, 17°45'38.482"E

MUNICIPAL HOUSE OF CULTURE ELEKTRA

Městský dům kultury Elektra
Masarykova 950
763 26 Luhačovice
☎ +420 577 131 104
www.mdkelektra.cz
49°6'4.191"N, 17°45'29.629"E

Elektra Cinema
☎ +420 577 132 709

Elektra Gallery
☎ +420 577 131 104

MUSEUM OF THE LUHAČOVICE ZÁLESÍ

Muzeum luhačovického Zálesí
Masarykova 950
763 26 Luhačovice
☎ +420 577 132 883
www.muzeum-zlin.cz
49°6'2.583"N, 17°45'31.883"E

Event highlights

MAY

- Opening of Springs – opening of main spa season, Luhačovice

JUNE

- Maňas Sehradice – Brass-band Festival, Sehradice,
(tel.: +420 577 138 245
www.sehradice.cz)

JULY

- Music Festival Janáček and Luhačovice
- Luhačovice folk festival

AUGUST

- Václav Hudeček Academy, Luhačovice
- Theatre Luhačovice – review of small theatre art forms

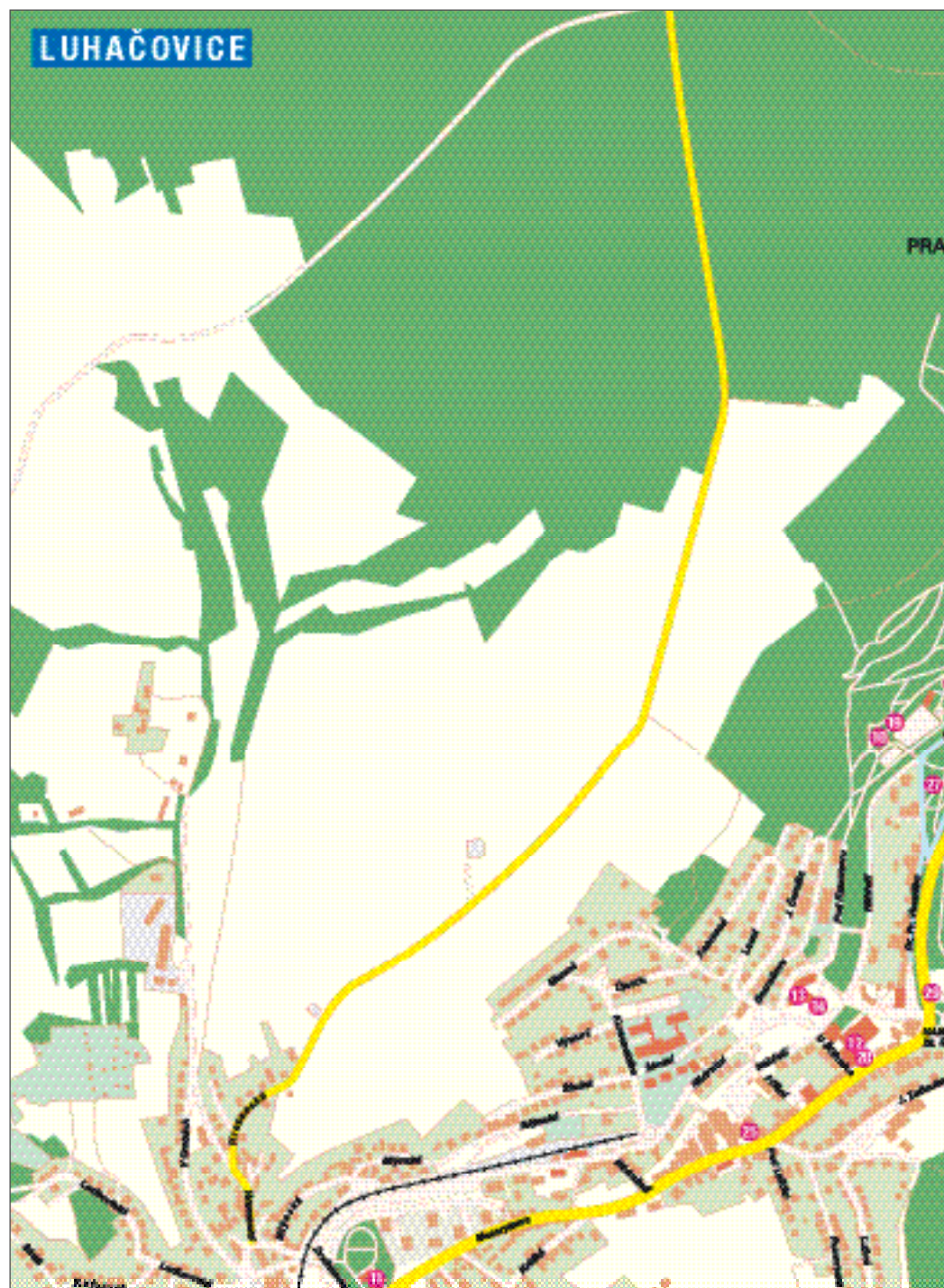
SEPTEMBER

- Song and Dance – International Festival of Children's Folklore Ensembles, Luhačovice

DECEMBER

- Christmas Crafts Festival, Luhačovice

(for more information on events in Luhačovice call: +420 577 133 980, www.luhacovice.cz)





LEGEND

Route 1 (pages 34–35)

1. Jurkovič House
2. Amadeus
3. Vlachovka
4. Jerňák
5. Water Therapy Institute
6. Music pavilion
7. Villa Vostrník
8. Villa Voláček
9. Bedřich Smetana House and Brancoski Rožanská Zámek
10. Otava
11. Chateau and statue of St. Gotthard
12. Museum of the Lubaňovské Zámek
13. Church of the Sacred Family
14. St. Josef spring

Route 2 (page 36)

15. Villa Ragie
16. Villa Pražner
17. Augustine House
18. Samončík family house

Route 3 (pages 38–39)

19. Villa Ragie
 20. Villa Pražner
 21. Augustine House
 22. Samončík family house
- Other points on route 3 see map of Lubaňovské Region.
- Other points of interest (page 37)
23. Tennis pavilion
 24. Bust of Leoš Janáček
 25. Chloupek (Cottage)
 26. Chapel of St. Elizabeth
 27. Statue of MUDr. František Veselý
 28. Villa Alpek's ridge
 29. Krystal
 30. Alotika
 31. Spring of Dr. Štávek
- Important contacts (pages 43–44)
32. Municipal information center LubaInfo
 33. Travel and information agency LubaInfo

LUHAČOVICE REGION



Welcome to South Wallachia

Southern Wallachia is the region at the meeting place of the White Carpathians, Beskydy Mountains, and Vizovice Hills. It is famous not only for the White Carpathian orchid meadows, but for its distinctive Wallachian folk culture, and its remarkable historic sites both ancient and more recent.

History enthusiasts can look forward not only to the traditional Wallachian wooden houses, but also one

of the oldest castles in the country: Brumov; or the area's urban monument zones, or important sites of World War II at Slavičín and around Valašské Klobouky.

The greatest number of natural monuments and reserves is concentrated in the areas around Valašské Klobouky and Brumov-Bylnice, in the White Carpathians protected landscape area and biosphere



Castle Brumov



Brewery Below the Castle



Chateau Slavičín



reserve. Southern Wallachia offers some interesting museums – in Slavičín, Valašské Klobouky, Ploština or in Brumov-Bylnice, as well as a number of remarkable cultural events, from the St. Adalbert pilgrimage in Slavičín to the music festival Hradní tony (Castle Tones), to the Castle Tower chess tournament in Brumov-Bylnice or the Wallachian Art Fair or the St. Nicholas fair in Valašské Klobouky.

Southern Wallachia offers excellent opportunities to spend pleasant holidays both winter and summer. There are marked trails for hiking, horseback riding or bicycling; places to go mushroom hunting or fishing, hang out by the water, or play tennis. For winter sports lovers there are also well-equipped ski centers with dozens of slopes and maintained cross-country trails.



Wooden House in Valašské Klobouky



Castle Tower Chess Tournament in Brumov-Bylnice



Meeting of Musicians in the White Carpathians



White Carpathian Forest Ščurnica

Valašské Klobouky – The Center of South Wallachia

Valašské Klobouky is the natural center of the southern part of Wallachia. It is a town of fascinating historical sites, rich tradition, as well as beautiful nature, which offers a number of opportunities for vacationing all year round. The most valuable sites in the historic town centers, like the Old Town Hall (today a museum), the church of the Raising of the Holy Cross, and several folk cottages, are protected as part of the town's urban monument zone. The original village of Klobúk is first mentioned in the written record in 1341. Because it was plagued by floods, it was moved fifteen years later to the heights above Old Klobúk and rechristened Nový Klobúk. The two parts were merged in 1423 into the small town of Klobúky. From the mid-16th century Klobúky became

the center of an area the economy of which was based on cloth making, but its prosperity was damaged in the 17th and early 18th centuries by the attacks of the Bočkejovs, Turks, Tatars, and Rákóczi's Hungarian insurgents. Paradoxically, the ravages of war were accompanied by orders from the armies for clothing, and thus a new blossoming of the cloth making industry in the late 18th-early 19th centuries. A large fire in 1896 destroyed much of the town's architectural heritage. Likewise, little remains of the textile industry. The textile factories Šerý and Umtex were replaced by machine tool factories after 1948.

Klobouky is a traditional bastion of Wallachian folklore. Besides the many local folk ensembles and societies

Did you know that:

Klobouky only came to be called Valašské Klobouky in the 1880's?



Old Town Hall



Horn's House and Marian Column



Wallachian St. Nicholas Market



that put on events like the Wallachian Art Fair or the famous Wallachian St. Nicholas Market, the local museum and gallery also sees to the cultural life in Valašské Klobouky.

Valašské Klobouky lies amid the natural wonder of the White Carpathians. In the surrounding area there are a number of remarkable localities such as Bílé potoky, Javorůvky, or Ščůrnica. The natural beauties of this protected area of the White Carpathians invite you for hiking, recreation, and relaxation. This lovely area is accessible via marked walking trails; there are ski slopes with lifts, and groomed cross-country ski trails. Accommodation capacity and quality restaurant services are a matter of course.



Kloboucký plážák beach tournament



Wallachian St. Nicholas Market – wheelwright



Wallachian Art Fair



Meeting of Musicians in the White Carpathians



Ensemble Závřan from Nedašov at the market

SOUTH WALLACHIA

ROUTE 1: Historic sites in Valašské Klobouky

The most valuable monuments in Valašské Klobouky are protected within the urban monument zone. We can start our tour on the square in front of the Old Town Hall.

OLD TOWN HALL

Městské muzeum (Municipal Museum)
Masarykovo náměstí 276
766 01 Valašské Klobouky
☎ +420 577 320 095
www.muzeum-valasskeklobouky.cz
49°8'25.298"N, 18°0'27.021"E

The building of the Old Town Hall with its tower was originally Renaissance; it was given its present appearance gradually during Baroque reconstruction in 1797–1798 and another one in 1943. The Old Town Hall houses the municipal museum. Here you will find an exposition on Prehistory in South Wallachia, and a lovely exhibit hall that hosts exhibitions, lectures, and concerts.

PILLORY

www.muzeum-valasskeklobouky.cz
49°8'25.501"N, 18°0'26.103"E

In front of the town hall stands a pillory, one of the oldest surviving of its kind in the country.



RED HOUSE

Masarykovo náměstí 194
766 01 Valašské Klobouky
☎ +420 577 320 095
www.muzeum-valasskeklobouky.cz
49°8'22.902"N, 18°0'28.623"E



The Červený dům (Red House) was built in 1781 by the brothers Tomaščík, master weavers. The



house is part of the museum, and its 19th century interiors house an exhibit on Klobouky's most famous craft, cloth weaving, together with dyeing. The trough in the wall and the traditional red color of the facade gave rise to the legend that an executioner lived in the house, and the blood of those put to death flowed through the trough. But in fact the

trough only served to dispose of kitchen waste. .

HORN HOUSE

Masarykovo náměstí 189
766 01 Valašské Klobouky
www.valasskeklobouky.cz
49°8'23.76"N, 18°0'29.613"E
Bratmann villa, Smetanova 116
49°8'30.132"N, 18°0'23.267"E

The Art Nouveau Horn House houses the municipal offices. The interior retains its original stucco decoration and stairway with banister and lighting. It also has the originals of the sandstone statues from the Marian column that stands in front of the house. The architect of this and other houses in the area, for exam-

ple the Bratmann villa by the church, was Klobouky native Hubert Gessner (1871–1943).

WOODEN HOUSES

Soukenická and Brumovská Streets
49°8'17.22"N, 18°0'32.589"E

Not far from the Red House in the direction of Brumov stand several remarkable folk structures from the

end of the 18th and beginning of the 19th centuries. The wooden houses on what was once the outskirts of



Klobouky give a clear impression of what life in the town was like. Each year the wooden houses are open

to the public for the famous Wal-lachian St. Nicholas Market. Craft courses are given in weaving, glove making, straw flowers, and others.

PARISH CHURCH OF THE RAISING OF THE HOLY CROSS

Smetanova
766 01 Valašské Klobouky
☎ +420 731 453 387
www.faraklobouky.cz
49°8'28.976"N, 18°0'20.795"E

The church with its Gothic core and massive, originally Renaissance tower from the late 16th century was, along with the parish house, burned during a Turkish-Tatar raid in 1663. The tower and the entire church were given their present appearance during the Baroque reconstruction of 1771.



ROUTE 2: Královec and surroundings

This route will take you to the top of the Královec peak above Valašské Klobouky, where you can take a walk through the beautiful countryside and look down on the land from the observation tower.

KRÁLOVEC RECREATION AREA

Na Královci 460
766 01 Valašské Klobouky
☎ +420 732 222 155

www.kralovec.cz
49°8'7.051"N, 18°2'43.275"E

Excellent departure point for walkers.

KRÁLOVEC INSTRUCTIONAL TRAIL

49°8'25.486"N, 18°1'8.259"E
(1st panel – railway station),
49°8'22.946"N, 18°1'3.146"E
(2nd panel – by the viaduct)

From Valašské Klobouky to Královec leads an interesting instructional trail suitable for families with children. On the 7-km route there are 12 panels with information on the White Carpathian landscape, protected areas, rare plants and animals, and the folk traditions and customs of the region.



Scything of the White Carpathian meadows

SOUTH WALLACHIA

KRÁLOVEC OBSERVATION TOWER

www.infocentrum-valasskeklobouky.cz
49°8'2"N, 18°2'18"E

This lookout tower at an elevation of 655 m, was opened in 2006. If you

Turn off the green trail toward Dělanovec and go down to the chapel and spring. The chapel was consecrated in 1999, replacing the previous chapel dedicated to the Virgin Mary. According to legend it was

This monument commemorates the raids by Tatars, Turks, and Hungarians into Moravia at the beginning of the 17th century. You can reach the monument by taking the forest trail off the road from Valašské Klobouky to Brumov (turnoff is located between the chapel and the forestry station about 300 m outside Valašské Klobouky; from there it is about 2.5 km to the memorial) or from the Koliba Motocest (about 2 km), or from the walking trail intersection Matka-sedlo, and from there to the Andělčák by the old carriage road.

BÍLÉ POTOKY NATURE RESERVE

<http://nature.hyperlink.cz>
49°6'56.326"N, 18°1'31.341"E

Between Brumov-Bylnice and Valašské Klobouky lies the Bílé potoky (White Creeks) nature reserve. Many springs rise in these meadows, and around them grows calc-sinter (travertine). The locality is known for its rare orchids, such as ophrys holoserica or marsh helleborine. The best time to visit is May and early June, when many of the rarest flowers are in bloom. During the summer holidays the meadows are hand-mowed by volunteers using the traditional scythes.



Královec Observation Tower

go up to the overlook platform 19 m above the terrain, you will get a view of the entire border area, and Povážský Inovec, and Velká Javořina. The overlook is open all year round.

PLOŠČINY AND ŠČÚRNICA

<http://nature.hyperlink.cz>
49°8'19.852"N, 18°3'30.761"E

The walking route leads around the Ploščiny nature reserve, which is a typical example of the White Carpathian flowering meadow pasture. Below the peak of Ploščiny lies the Ščúrnica – the White Carpathian forest that has been left free to grow by itself. The nature protectors bought the forest and care for it as a non-state reserve.

put up in honor of the miraculous healing of the ailing son of a local wheelwright.

OTHER POINTS OF INTEREST

ANDĚLČEK MONUMENT

www.infocentrum-valasskeklobouky.cz
49°7'12.284"N, 18°0'40.991"E



Ploščiny Nature Reserve

CHAPEL ON DĚLANOVEC

www.infocentrum-valasskeklobouky.cz
49°8'41.858"N, 18°4'11.145"E

ROUTE 3: The lovely Brumov-Bylnice

This route takes you to the historic town of Brumov-Bylnice, population six thousand. In 1995 the historic center of Brumov and the working-class neighborhood of Sidonia were declared an urban monument zone.

CASTLE BRUMOV

Brumov, 763 31 Brumov-Bylnice

☎ +420 736 768 350

<http://hrad.brumov-bylnice.cz>

49°5'29.761"N, 18°1'12.265"E



Did you know that: ?

author Ludvík Vaculík was born in Brumov-Bylnice, and of the younger generation actor and director Jakub Špalek and football player Tomáš Řepka?

This massive royal castle on an important trade route connecting Moravia and Hungary became the area's power center soon after its construction in the first half of the 13th century. Its fortifications were further strengthened in the 15th century, when Brumov for a time became the stronghold of the Hussites in eastern Moravia. The importance of the castle grew even more at the end of the 15th century during the Hungarian wars, and during the tumultuous 17th century, when the region was pillaged by the raids

of the Turks and Tatars. The castle withstood their assault, but not the town below it. These and other events are explained to the visitor at the history exhibit in the cellars of the upper castle courtyard. Among the traditional events held at the castle is the Castle Tower – a chess tournament held on a giant chessboard with live figures. Another is Castle Tones – a young people's music festival, and Fairy Tale Castle. Visitors are also entertained by fen-



Baroque pulpit made of oak dating to 1672, and the church baptismal. Also precious is the organ, a work of Rococo woodcarving with gilding and polychromy, dating to 1768; and the fine sandstone tomb marker belonging to the Lords of Lomnice.

HISTORY ON THE SQUARE

ul. Hildy Synkové

763 31 Brumov-Bylnice

49°5'29.191"N, 18°1'22.292"E

Other important architectural monuments in Brumov include the town hall, with its period ceiling vaults, the newly-renovated stone fountain from 1868, the Holy Trinity statue from 1777, and the fine statues in the park.



cing exhibitions, concerts, theater plays, and other events.

PARISH CHURCH OF ST. WENCESLAS

ul. Č. Kramoliše

763 31 Brumov-Bylnice

☎ +420 577 330 326

<http://farnostbrumov.ic.cz>

49°5'21.321"N, 18°1'29.68"E

The origins of this church, like those of the castle, lie in the mid-13th century. One of the most valuable objects is the stone statue of St. Wenceslas from 1217, a beautiful

SOUTH WALLACHIA

BREWERY

Pivovarská 955
763 31 Brumov-Bylnice
49°5'26.808"N, 18°1'14.444"E

The former brewery complex dating from 1573 is one of the oldest industrial enterprises in Wallachia. Its current form dates from the late 19th century, when the brewery was modernized. The massive cellars are dug directly beneath the castle hill, and the area includes four fishponds also belonging to the brewery.

JEWISH CEMETERY

www.brumov-bylnice.cz
49°6'2.868"N, 18°1'17.063"E



The first written mention of this cemetery dates to 1758; the last burial occurred here in 1931.

You can see some fifty gravestones made of granite, sandstone, or marble, along with a memorial plaque commemorating the Jewish citizens who perished in the concentration camps.

GLASSMAKERS' COLONY

Sidonie čp. 65–70
763 31 Brumov-Bylnice
49°2'47.823"N, 18°4'53.372"E

In the village of Sidonie you can find the houses of a glassmakers' colo-



ny from around the turn of the 20th century. Houses 65–70 are historically protected; in front of them stands a shared kiln for making bread. Such evidence of the way of life of workers a hundred years ago is very rare.

MUNICIPAL MUSEUM

Podzámčí 861
763 31 Brumov-Bylnice
☎ +420 577 330 138
www.brumov-bylnice.cz
49°5'36.172"N, 18°1'21.344"E

The museum, located in the renovated spaces of the family villa of the



last owners of the Brumov estate, was opened in 2004. The permanent exhibition focuses on the life of the people who lived beneath the Brumov castle, and the typical crafts and furnishings of ordinary households. The exhibition areas host archeological, ethnographic, and historical exhibits. The museum works with the town's cultural center to organize Easter and Christmas markets of traditional crafts, as well as exhibitions and discussions.

LAZY NATURE RESERVE

<http://nature.hyperlink.cz>
49°3'32.034"N, 18°0'35.946"E

This nature reserve protects a flowering wetland meadow on the slopes of the Pláňava hill (598 m above sea level). You can reach it from Bylnice along the blue walking trail. The meadow is extraordinarily rich in orchids: from April to June some twenty species bloom. Besides orchids you can also spot in the meadow several species of butterfly, such as wood white, little blue, or brown longtail.

ROUTE 4: Slavičín and area

Slavičín lies in the foothills of the White Carpathians; its original agricultural character was changed by the arrival of the shoe industry, which was begun in 1860 by Josef Pivečka. After World War II the area saw the development of the machine tool and arms industries. We start our tour of the town by its oldest building – the parish church.

CHURCH OF ST. ADALBERT

Komenského
763 21 Slavičín
☎ +420 739 245 911
www.farnost-slavicin.ic.cz
49°5'33.059"N, 17°52'30.343"E



The church is one of the oldest in the region; its origins lie at the turn of the 12th century. It gained its present appearance at the end of the 17th century. It's no coincidence that it's consecrated to St. Adalbert – legend has it that he stayed here in the year 985.

Did you know that: ?

an air battle took place above Slavičín in August 1944 in which 10 American bombers were shot down?

MEMORIAL TO THE AMERICAN FLIERS

Komenského
763 21 Slavičín
49°5'34.689"N, 17°52'32.534"E



In the cemetery next to the church was the common grave of 28 American fliers who died here during an air battle above Slavičín on 29. 8. 1944, and were buried 31 August 1944. In 1946 their remains were taken to the central American military cemetery in Lorraine near the town of Saint Avold in France, to the national cemetery in the USA, and some to civilian cemeteries.

SLAVIČÍN CHATEAU

Osvobození 24, 763 21 Slavičín
49°5'22.306"N, 17°52'34.876"E
This Baroque chateau from 1750



Slavičín Chateau

was created by converting an older fortress. Before 1948 the chateau belonged to the family Wichterle, to whom it was returned after 1989. Today the chateau serves as a restaurant and wine bar. The adjacent park is a pleasant place for relaxing or taking a walk.

SAVINGS BANK

náměstí Mezi Šenky 123
763 21 Slavičín
49°5'22.925"N, 17°52'27.612"E

On the square Mezi Šenky a building was built in 1893 to house the savings bank. Its finest feature is the beautifully decorated ceiling in the social hall.



SOUTH WALLACHIA

SLAVIČÍN MUNICIPAL MUSEUM

Horní náměstí 102
763 21 Slavičín
☎ +420 577 004 831
📠 +420 731 508 004
www.muzeum.mesto-slavicin.cz
49°5'17.97"N, 17°52'28.238"E



In the museum's permanent exhibit you will learn about the details of the air battle that took place on August 29, 1944 over Slavičín. Among other things you can see a number of airplane parts and arms of American and German airplanes, accompa-

Did you know that: ?

the men of Slavičín were known far and wide as experienced animal neuterers?

nied by rich photo documentation. Another exhibit presents local archaeological finds.

PIVEČKA FOREST PARK

K Parku, 763 21 Slavičín
☎ +420 577 342 822
www.pivecka.cz
49°5'43.16"N, 17°52'8.412"E

The forest park was established in 1940 by the family of local shoe factory owner Jan Pivečka. It served its original purpose until shortly after the factory was nationalized in 1948. The neglected forest park was restored in the 1990s, and thanks to the work of students of the Academy of Applied Industrial



Arts it was made into an open-air art gallery, and a good place for walks and children's games.

ROUTE 5: Natural wonders and the beauty of the Vizovice Hills

Beside the White Carpathians protected landscape area, a UNESCO Biosphere Reserve, part of southern Wallachia is protected within the Vizovice Hills nature park. Amid the natural beauty you will also encounter the rich history of this region.

PLOŠTINA NATIONAL CULTURAL MONUMENT

Drnovice 23
763 25 Újezd
☎ +420 732 380 535
www.muzeum-zlin.cz
49°11'51.262"N, 17°57'29.717"E

A memorial not far from Drnovice commemorates the tragic fate of a village destroyed around at end of



Chapel at Ploština memorial

World War II. On 19 April 1945 the Nazis murdered 24 local residents for supporting partisans. The site is commemorated with a recently



reconstructed monument to the victims of World War II. In the chapel are the names of the murdered villagers. In one of the houses there is an exhibit devoted to the persecution of the civilian population during the war, the foreign resistance, Nazi prisons and concentration camps, and the victims of racial persecu-

tion. The building also holds an interesting exhibit on orientation running.

KLÁŠŤOV

www.vysokepole.cz

49°12'20.349"N, 17°56'44.212"E

Not far from Ploština, on the peak of Klášťov (753 m above sea level) is the highest location of a prehistoric and early medieval fortress settlement in Moravia. More than 700 iron objects discovered over the last few years show that during the era of the Great Moravian Empire in the late 9th century Klášťov was an important regional center, and the site of a cult to which iron votive offerings were carried. Klášťov is the first proven locality of this type in the wider context of Central Europe.

LOUČKA OBSERVATION TOWER

Loučka, 763 25 Újezd

☎ +420 737 129 896

<http://rozhlednaloucka.unas.cz>

49°10'59.079"N, 17°52'30.779"E



This observation tower built in 2004 on the Doubrava Hill (676 m above sea level) offers an excellent view from a 33 m tower, taking in not only the central part of the Vizovice Hills, but also, under good conditions, the ranges of the Hostýn, Beskydy, and the Malá and Velká Fatra.



Important contacts

MUNICIPAL INFORMATION CENTER

Městské informační středisko
Podzámčí 861
763 31 Brumov-Bylnice
☎ +420 577 330 138
☎ +420 731 083 442
✉ infobb@volny.cz
www.brumov-bylnice.cz
49°5'36.172"N, 18°1'21.344"E

MUNICIPAL INFOCENTER

Městské infocentrum
Mladotické nábřeží 849
763 21 Slavičín
☎ +420 577 342 251
☎ +420 737 751 874
✉ kultura@mesto-slavicin.cz
www.mesto-slavicin.cz
49°5'15.625"N, 17°52'39.766"E

MUNICIPAL INFORMATION CENTER

Městské informační centrum
Masarykovo nám. 276
766 01 Valašské Klobouky
☎ +420 577 311 150
✉ infocentrum@mu-vk.cz
www.infocentrum-valasskeklobouky.cz
49°8'25.298"N, 18°0'27.021"E

Sports facilities

INDOOR WINTER STADIUM

Krytý zimní stadion
Družba 1188, 763 31 Brumov-Bylnice
☎ +420 608 810 805
www.hcbbss.cz
49°4'59.295"N, 18°1'17.418"E

MULTI-PURPOSE SPORTS GROUNDS AND INDOOR SWIMMING POOL

Základní škola (primary school)
Brumov-Bylnice, Družba 1178
763 31 Brumov-Bylnice
☎ +420 577 331 446
www.zsbru.hyperlink.cz
49°4'58.747"N, 18°1'19.111"E
(sportground)
49°4'54.834"N, 18°1'18.232"E
(swimming-pool)

Indoor pool, tennis, basketball, handball, soccer, track-and-field area

SWIMMING CENTER BRUMOV-BYLNICE

Koupaliště Brumov-Bylnice
ul. Družba, 763 31 Brumov-Bylnice
☎ +420 608 984 661
49°4'56.334"N, 18°1'22.194"E

Multi-purpose swimming pool, water attractions, refreshments

TENNIS COURTS

Družba 1218
763 31 Brumov-Bylnice
☎ +420 577 330 695 (Topas club)
49°5'13.576"N, 18°1'16.865"E

4 tennis courts, dressing rooms, restaurant, bowling

SPORTS AREA SOKOLOVNA

Sportovní areál Sokolovna
Osvobození 224, 763 21 Slavičín
☎ +420 603 918 963
www.mesto-slavicin.cz
49°5'12.921"N, 17°52'49.998"E

Multi-purpose sports arena with artificial surface (tennis, football-tennis, minigolf and other)

SWIMMING CENTER SLAVIČÍN

Koupaliště Slavičín
763 21 Slavičín
☎ +420 577 341 632
www.mesto-slavicin.cz
49°5'30.489"N, 17°52'41.859"E

Swimming pool, wading pool, sports area, refreshments

TENNIS AREA OÁZA

Tenisový areál Oáza
Luhačovská ul.
763 21 Slavičín
☎ +420 603 323 007
www.mesto-slavicin.cz
49°5'16.077"N, 17°51'39.308"E

5 tennis courts, dressing rooms, refreshments

SKI-LIFT ŠTÍTNÁ NAD VLÁŘÍ

Lyžařský vlek Štítná nad Vláří
763 33 Štítná nad Vláří-Popov

☎ +420 604 116 061
☎ +420 776 129 979 (summer skiing)
www.stitna-popov.cz
49°3'55.485"N, 17°58'14.76"E

Length of lift 650 m, children's ski-lift, nighttime skiing, refreshments, summer skiing on grass

SWIMMING CENTER ŠTÍTNÁ NAD VLÁŘÍ

Koupaliště Štítná nad Vláří
763 33 Štítná nad Vláří-Popov
☎ +420 604 116 061
www.stitna-popov.cz
49°3'52.408"N, 17°58'48.661"E

Swimming pool, children's pool, beach-volleyball court, refreshments

SKI-LIFT ÚJEZD

Lyžařský vlek Újezd
763 25 Újezd
☎ +420 577 350 121 (town hall)
www.ujezdvk.com
49°9'18.626"N, 17°55'10.634"E

Length of lift 470 m, nighttime skiing, refreshments

SWIMMING CENTER ÚJEZD

Koupaliště Újezd
763 25 Újezd
☎ +420 721 762 536
49°10'17.571"N, 17°55'4.372"E

Swimming pool, children's pool, sports area, minigolf, refreshments, outdoor cinema

SKI-LIFT JELENOVSKÁ

Lyžařský vlek Jelenovská
766 01 Valašské Klobouky
☎ +420 602 704 646
(Ski Club Valašské Klobouky)
49°7'45.748"N, 18°0'28.977"E

Length of lift 350 m, night-time
skiing, refreshments

SPORTS GROUNDS

Školní, 766 01 Valašské Klobouky
☎ +420 737 383 364
www.infocentrum-valasskeklobouky.cz
48°8'49.427"N, 18°0'51.918"E

Multi-purpose sports field with
artificial surface for tennis,
volleyball, basketball, soccer

STABLE LIPINA

Stáj Lipina, 766 01 Valašské Klobouky
☎ +420 603 879 047
www.lipina.cz
49°7'48.895"N, 17°58'47.714"E

Horseback riding, riding courses,
accommodation

SWIMMING CENTER VALAŠSKÉ KLOBOUKY

Koupaliště Valašské Klobouky
Partyzánská ul.
766 01 Valašské Klobouky
☎ +420 605 780 386
www.infocentrum-valasskeklobouky.cz
49°8'33.545"N, 18°0'25.109"E

Swimming pool, children's pool and
wading pool, refreshments

MULTI-PURPOSE SPORTS AREA

763 24 Vlachovice
☎ +420 577 324 026 (town hall)
www.vlachovice.cz
49°7'24.239"N, 17°56'34.913"E

Tennis, volleyball, basketball,
minisoccer, badminton

SWIMMING CENTER VLACHOVICE

Koupaliště Vlachovice
763 24 Vlachovice
☎ +420 577 324 026 (town hall)
www.vlachovice.cz
49°7'24.058"N, 17°56'38.826"E

Swimming pool, children's
pool, beach-volleyball court,
refreshments



Sports area Sokolovna in Slavičín



Tennis area Oáza in Slavičín



Swimming center at Brumov-Bylnice

Culture and entertainment

CINEMA

Kino
Družba 1188, 763 31 Brumov-Bylnice
☎ +420 577 330 226
www.brumov-bylnice.cz
49°4'59.295"N, 18°1'17.418"E

MUNICIPAL MUSEUM

Městské muzeum
Podzámčí 861, 763 31 Brumov-Bylnice
☎ +420 577 330 138
www.brumov-bylnice.cz
49°5'36.172"N, 18°1'21.344"E

MUNICIPAL CINEMA

Městské kino
Osvození 224, 763 21 Slavičín
☎ +420 577 341 108
49°5'12.921"N, 17°52'49.998"E

MUNICIPAL MUSEUM SLAVIČÍN

Městské muzeum Slavičín
Horní náměstí 102
763 21 Slavičín
☎ +420 577 004 831
☎ +420 731 508 004
www.muzeum.mesto-slavicin.cz
49°5'17.97"N, 17°52'28.238"E

MUSEUM OF THE AIR BATTLE OVER ŠANOV

Muzeum letecké bitvy v Šanově
Šanov 74, 763 21 Slavičín
☎ +420 577 341 634 (town hall)
www.sanov.unas.cz
48°48'2.056"N, 16°22'46.438"E

CINEMA SVĚT

Kino Svět
ulice 2. května 916
766 01 Valašské Klobouky
☎ +420 577 320 167
www.infocentrum-valasskeklobouky.cz/kino_svet
49°8'26.451"N, 18°0'32.504"E

MUNICIPAL MUSEUM

Městské muzeum
Masarykovo náměstí 276
766 01 Valašské Klobouky
☎ +420 577 320 095
www.muzeum-valasskeklobouky.cz
49°8'25.298"N, 18°0'27.021"E

Event highlights

MARCH

- Wallachian bushes – competition of amateur theatre ensembles, Slavičín

APRIL

- St. Adalbert Market, Slavičín

MAY

- Festival of the Opening of the castle gate and chess tournament "Castle Tower", Brumov-Bylnice
- "Brumovský semafor" (Brumov Traffic Lights) – music festival held in the museum, Brumov-Bylnice (<http://hrad.brumov-bylnice.cz>)

JUNE

- Castle Tones – music festival of young people, Brumov-Bylnice

JULY

- Valašské kumštování (Wallachian Art Fair) – four-day international encounter of painters, sculptors, potters, wood-cutters, and folklore, theatre and music ensembles, market, Valašské Klobouky (www.sweb.cz/dubrava.folklor)

AUGUST

- Fairy-tale Castle, Brumov-Bylnice (<http://hrad.brumov-bylnice.cz>)
- Klobucký plážák – international open city beach tournament, Valašské Klobouky (www.klobuckyplazak.info)
- Meeting of Musicians in the White Carpathians – international music and folklore festival with wine tasting and fireworks, Valašské Klobouky (tel.: +420 577 320 579)
- Nedašov harvest festival, Nedašov (tel.: +420 577 305 133, e-mail: vladimirkana@seznam.cz)

DECEMBER

- Wallachian St. Nicolas Fair – traditional country fair with masks, market, demonstrations of traditional crafts, local specialties, Valašské Klobouky (www.jarmek.cz)



Shrove's Tide festival in Slavičín

(more information on events in Slavičín at www.mesto-slavicin.cz)

VALASSKÉ KLOBOUKY



LEGEND

Routes 1 (pages 50–51)

1. Old Town Hall

2. Pilgrimage

3. Red House

4. Horn House

5. Brothers' villa

6. Wooden houses

7. Parish church of the Raising of the Holy Cross

Routes 2 (pages 51–52)

8. Klobouček Instructional trail

Other points on route 2 see map of South Valašsko.

Important contacts (pages 58–60)

9. Municipal information center



SOUTH WALLACHIA

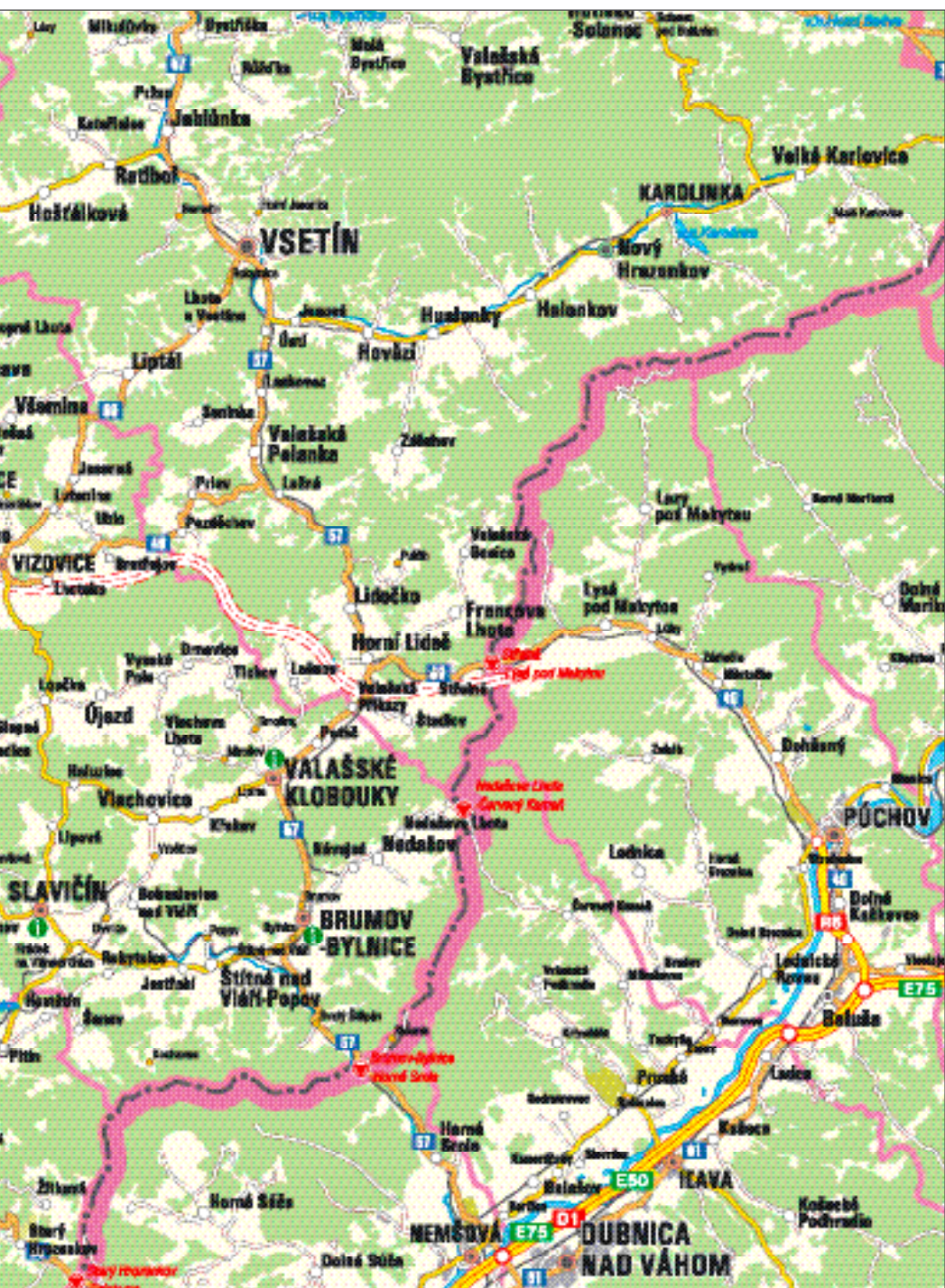


Index

Biskupice	42	Lípa	16	Lukov instructional trail	12
		Ranch "na Vyhliďce".....	16	Vela natural monument	13
Brumov-Bylnice	53	Loučka	57	Napajedla	25
Brewery.....	54	Loučka observation tower.....	57	Culture and entertainment.....	29
Castle Brumov.....	53			Church of St. Bartholomew.....	25
Culture and entertainment.....	60	Luhačovice	32	Event highlights.....	29
Event highlights.....	60	Aloiska and spring.....	37	Important contacts.....	28
Glassmakers' colony.....	54	of Dr. Šťastný.....	37	Museum Napajedla.....	25
History on the square.....	53	Amandka.....	34	Napajedla Chateau.....	25
Important contacts.....	58	Augustinian House.....	38	Napajedla Horse Farm.....	26
Jewish cemetery.....	54	Bedřich Smetana House.....	35	Recreation Centre Pahrbek.....	28
Lazy nature reserve.....	54	and Brussels Fountain.....	37	Sports facilities	28
Municipal museum.....	54	Bust of Leoš Janáček.....	37	Town Hall	25
Parish church.....		Culture and entertainment.....	44		
of St. Wenceslas.....	53	Chaloupka (Cottage).....	37	Nedašov	60
Sports facilities	58	Chapel of St. Elizabeth.....	37	Nedašov harvest festival.....	60
		Chateau and statue of.....			
Březůvky	43	St. Gothard	36	Otrokovice	22
Recreation Centre.....		Church of the Sacred Family...36		Cinema Otrokovická Beseda	29
Březůvky.....	43	Event highlights.....	44	Community House.....	24
		Important contacts	43	Church of St. Adalbert.....	24
Dobrkovice	42	Jestřabí.....	34	Event highlights.....	29
		Jurkovič House.....	34	Maps – Otrokovice, Otrokovice	
Dobrušky	42	Krystal.....	37	Region.....29, fold-out	
Natural monument Uhliska.....	42	Maps – Luhačovice,		Morava River	
		Luhačovice Region ...45, fold-out		and Baťa Canal.....	24
Drnovice	56	Museum of the Luhačovice		Na letišti natural site.....	24
Ploština national cultural		Zálesí.....	36	Recreation area Štěrkovické.....	28
monument.....	56	Music pavilion.....	35	Sports facilities	28
		Ottovka.....	35	Statue of Tomáš Baťa.....	24
Halenkovice	27	Samorostlá family house.....	38		
		Sports and wellness		Podhradí	40
Horní Lhota	40	facilities.....	43	Starý Světlav.....	40
Sehrad.....	40	St. Josef spring.....	36		
		Statue of.....		Pozlovice	38
Hřivínův Újezd	42	MUDr. František Veselý.....	37	Important contacts	43
		Tennis pavilion.....	37	Luhačovice Reservoir.....	39
Hvozdná	16	Villa Alpská růže.....	37	Sports and wellness facilities.....	43
Sports Center Hvozdná.....	16	Villa Pracner.....	38		
		Villa Regia.....	38	Provodov	40
Jasenná	15	Villa Valaška.....	35	Čertův kámen natural site	41
Magistrate Mikuláščík's		Villa Vlastimila.....	35	Provodov – Malenisko.....	40
farmstead.....	15	Vincentka.....	34	Rýsov.....	41
Sports facilities	16	Water Therapy Institute.....	34		
				Sehradice	44
Kaňovice	42	Lukov	12	Swimming centre.....	44
		Castle Lukov.....	12	Maňas Sehradice –	
Kašava	18	Krátký natural monument	13	Brass-band Festival.....	44
Event highlights.....	18				

Slavičín55	Bílé potoky nature reserve.....52	Big Cinema.....8
Culture and entertainment.....60	Culture and entertainment.....60	Castle Malenovice.....11
Church of St. Adalbert.....55	Chapel on Dělanovec.....52	Collective Residential House, Alternativa cultural institute.....6
Event highlights.....60	Event highlights.....60	Community House – Interhotel Moskva.....8
Important contacts.....58	Horn House.....50	Congress and university center.....9
Memorial to the American fliers.....55	Important contacts.....58	Culture and entertainment.....18
Pivečka forest park.....56	Královec instructional trail.....51	Event highlights.....18
Savings bank.....55	Královec observation tower.....52	Forest Cemetery in Zlín.....10
Slavičín Chateau.....55	Královec Recreation Area.....51	Health Trail.....9
Slavičín Municipal Museum.....56	Maps – Valašské Klobouky, South Wallachia.....61, fold-out	Important contacts.....16
Sports facilities.....58	Old Town Hall.....50	Kostelec Spa.....11
	Parish church of the Raising of the Holy Cross.....51	Lazy recreation area.....7
	Pillory.....50	Maps – Zlín, Zlín Region.....19, fold-out
Slopné15	Ploščiny and Ščurnica.....52	Municipal spa.....7
Cylinder mill.....15	Red House.....50	Municipal theater.....6
	Sports facilities.....59	Museum of Footwear.....10
	Wooden houses.....50	Protestant Church.....7
Slušovice15		Residential living in Baťa's Zlín.....8
Derby Golf Club Slušovice.....16	Velký Ořechov42	Roman Catholic Church of St. Phillip and James.....6
Event highlights.....18	Vizovice13	Sports and wellness facilities.....17
	Culture and entertainment.....18	Sports complex.....8
Spytihněv26	Distillery Land.....14	Štípa.....12
Recreation area Skleníky	Event highlights.....18	Svatá voda (Holy Water).....11
Spytihněv.....28	Glass Atelier Morava.....14	Tomáš Baťa Memorial – Art House, dormitories.....8
	Historic sites of the urban monument zone.....13	Tomáš Baťa University.....9
Šanov60	Sports facilities.....16	Tomáš Baťa Villa.....10
Museum of the air battle over Šanov.....60	Vizovice Chateau.....13	Town Hall building.....6
	Vizovické Hills nature park.....14	Zlín Chateau and the Museum of Southeastern Moravia.....10
Štítná nad Vláří58		Zlín Skyscraper – 21 st administration building.....9
Sports facilities.....58	Vlachovice59	Zoological garden Zlín and Lešná chateau.....11
	Sports facilities.....59	Želechovické Pastures nature park.....14
Tečovice11	Všemina15	
Tečovice Church.....11	Ranch Všemina.....16	Žlutava27
	Vysoké Pole57	
Tlumačov27	Kláštov.....57	
Event highlights.....29	Zádveřice-Raková17	
Important contacts.....28	Sports facilities.....17	
Regional Horse Farm.....27		
Tlumačov Pool.....27	Zlín4	
Tlumačov's historical sites.....27	Artificial ski slope.....7	
	Astronomical Observatory.....7	
Trnava16	Baťa shoe factories.....10	
Sports facilities.....16		
Újezd58		
Sports facilities.....58		
Valašské Klobouky48		
Andělíček Monument.....52		





MORE INFORMATION ABOUT THE REGION

You can get more information about tourist destinations and services in the region from the employees of our tourist information centers.

You will also find detailed information about the Zlín and Luhačovice regions at the Eastern Moravia tourist information portal at www.vychodni-morava.cz, and on the web pages of the Moravian Amber Trail at www.ambertrail.cz.

INFORMATION CENTERS

MUNICIPAL INFORMATION CENTER

Městské informační středisko
Podzámcí 861, 763 31 Brumov-Bylnice

☎ +420 577 330 138

📠 +420 731 083 442

✉ infobb@volny.cz

www.brumov-bylnice.cz

MUNICIPAL INFORMATION CENTER LUHA INFO

Městské informační středisko Luha info
Masarykova 950, 763 26 Luhačovice

☎ +420 577 133 980

☎ +420 577 132 341

✉ luhainfo@mesto.luhacovice.cz

www.luhacovice.cz

TRAVEL AND INFORMATION AGENCY LUHANKA

Luhačovická cestovní a informační agentura Luhanka
nám. 28. října 441, 763 26 Luhačovice

☎ +420 577 681 103

✉ luhanka@lazneluhacovice.cz

www.lazneluhacovice.cz

MUNICIPAL INFORMATION CENTRE NAPAJEDLA

Městské informační centrum Napajedla
Na Kapli 459, 763 61 Napajedla

☎ +420 577 944 247

📠 +420 737 230 563

✉ infocentrum@napajedla.cz

www.napajedla.cz

TOWNSHIP POZLOVICE

Městys Pozlovice
Hlavní 51, Pozlovice, 763 26 Luhačovice

☎ +420 577 132 212

✉ mestys@pozlovice.cz

www.pozlovice.cz



MUNICIPAL INFOCENTER

Městské infocentrum
Mladotické nábřeží 849
763 21 Slavičín

☎ +420 577 342 251

📠 +420 737 751 874

✉ kultura@mesto-slavicin.cz

www.mesto-slavicin.cz

CULTURAL AND INFORMATION CENTRE TLUMAČOV

Kulturní a informační středisko Tlumačov
nám. Komenského 170
763 62 Tlumačov

☎ +420 577 929 023

📠 +420 724 368 378

✉ vedoucikis@tlumacov.cz

www.tlumacov.cz/kis

MUNICIPAL INFORMATION CENTER

Městské informační centrum
Masarykovo nám. 276
766 01 Valašské Klobouky

☎ +420 577 311 150

✉ infocentrum@mu-vk.cz

www.infocentrum-valasskeklobouky.cz

MUNICIPAL INFORMATION AND TOURIST CENTER

Městské informační a turistické středisko
nám. Míru 12, 761 40 Zlín

☎ +420 577 630 222

☎ +420 577 630 270

✉ is@muzlin.cz

www.mestozlin.cz